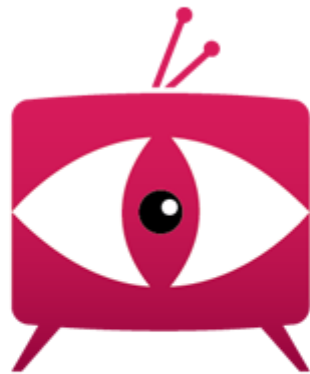


# ARGUS TV – Installation Guide

---



**A R G U S T V**

## Table of Contents

1	Intro .....	4
2	What is ARGUS TV? .....	4
3	Configurations .....	5
4	Prerequisites.....	6
4.1	General .....	6
4.2	MediaPortal.....	6
4.3	Database.....	6
4.4	Recordings share(s) .....	7
4.4.1	Windows XP.....	7
4.4.2	Windows Vista/Windows 7/Windows 8.....	8
4.5	Web Access.....	10
4.6	Messenger .....	11
5	Installation procedure .....	12
6	Quick check of the installation .....	18
6.1	Services.....	18
6.2	Database.....	18
7	Configuration.....	19
7.1	Add your Recorder .....	19
7.2	ARGUS TV Recorder.....	20
7.2.1	The Recorder Console .....	20
7.2.2	Detected cards.....	20
7.2.3	Satellites .....	22
7.2.4	Scanning .....	22
7.2.5	Card/service mapping.....	23
7.2.6	Status.....	25
7.2.7	Linking Services to channels .....	25
7.2.8	Grabbing EPG.....	28
7.2.9	Status dialog .....	28
7.2.10	Settings .....	28
7.2.11	Database.....	29
7.2.12	Config.....	29

7.2.13	Dumping streams (for troubleshooting only).....	29
7.3	MediaPortal TV Server.....	30
7.3.1	Enabling the ARGUS TV Recorder plugin.....	30
7.3.2	Configuration.....	30
7.4	Importing TV guide data.....	33
7.4.1	A word about “channels” .....	33
7.4.2	Importing using a XMLTV file.....	33
7.4.3	Import using the Guide Importer tool.....	34
7.5	Server Settings.....	35
7.6	Testing the Recording Shares .....	37
7.7	Scheduling Your First Recording.....	37
7.8	Channel logos .....	41
7.9	Server Status Tray Application .....	41
7.10	Web Access.....	43
7.11	Changing your username/password .....	44
7.12	Messenger Service.....	44
7.13	RTSP-streaming .....	45
8	Uninstall.....	46

## 1 Intro

Welcome to the **ARGUS TV** installation guide! In this guide you will find all information you need to know to get **ARGUS TV** up and running. Once installed, some configuration is needed, depending on the recorder you choose to install. Should you still have questions, suggestions or remarks, please visit the **ARGUS TV** forum at <http://www.argus-tv.com/forum>.

## 2 What is ARGUS TV?

**ARGUS TV** is an advanced rule-based scheduling system to record your favorite TV programs in a very intelligent way. It has full support for running as a service with multiple clients. Access to the system is available ranging from a typical Windows application over plugins for living-room Media playback software to internet Web Access to give you the maximum possible reach.

Because the scheduling system is rule-based it offers unparalleled power to record exactly what you want. The examples below can be easily set up in a single schedule definition each.

- Record any "CSI" episode shown somewhere between 7PM and 11PM, but not the ones from "Miami", and don't record episodes that have been recorded before.
- Record "The Simpsons" every Monday and Wednesday on Channel Foo around 7PM (so also when it's shown at 7:15PM or 6:55PM).
- Record all movies with "Samuel Jackson" on BBC1 or BBC2 and don't record movies that have been recorded before.
- Record all documentaries on NGC or Discovery Channel that have "Global warming" in their program information.

**ARGUS TV** has conflict management built-in to help the scheduler record as many programs as it can, based on your available recording devices. It will let you intervene manually as well.

**ARGUS TV** is very modular thanks to its Service Oriented Architecture. Recording are handled by what we call recorders. We provide a native ARGUS TV Recorder, and one for [MediaPortal TV Server](#). During installation you can choose which one you prefer. For analog cards, you need to use MediaPortal TV Server, otherwise we recommend to use ARGUS.

Recorded shows are stored on your system's hard disk and can be played back manually, from the Scheduler Console or from the **ARGUS TV** MediaPortal GUI plugin.

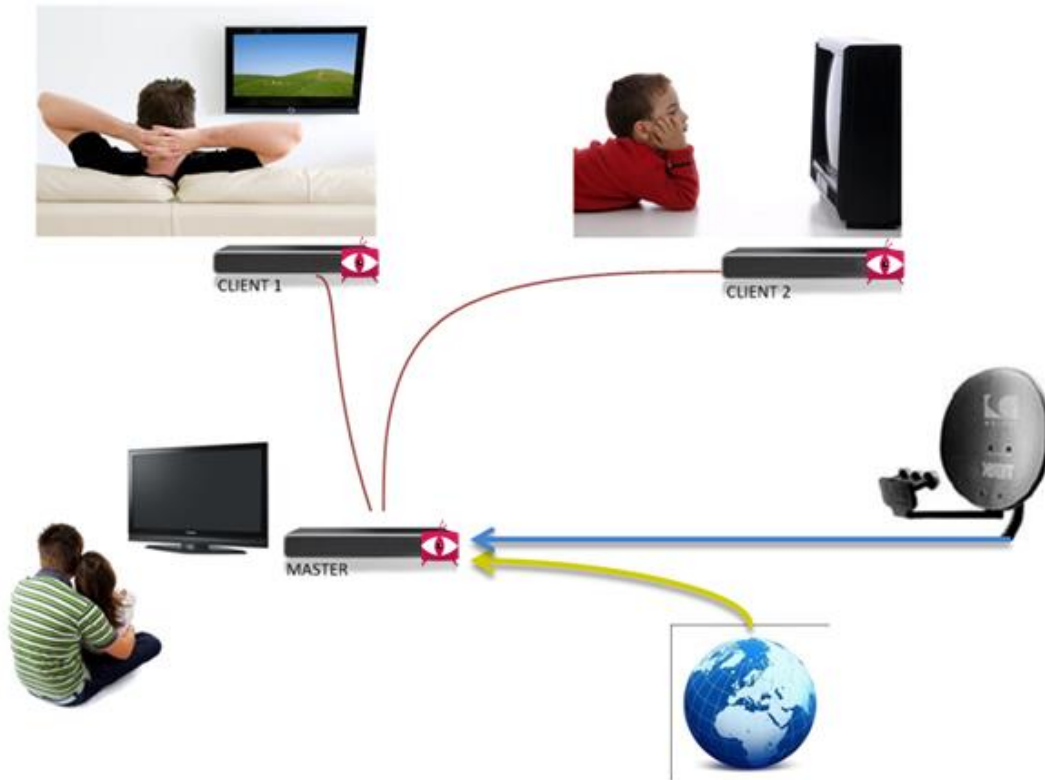
**ARGUS TV** can also be used to watch live TV, either via the provided MediaPortal plugin, or via your favorite mediaplayer, using the RTSP-streaming server.

### 3 Configurations

In a **single-seat configuration**, everything is installed on one machine (master)

In the **multi-seat configuration**, you will typically install **ARGUS TV** on several machines in your network. That will allow you to have a central master system, and several clients connected to it.

**ARGUS TV** means connected TV:



## 4 Prerequisites

### 4.1 General

To install **ARGUS TV** you need to have *Microsoft .NET Framework 4.0* installed on your machine. The **ARGUS TV** setup will check and download the correct .NET framework if it is not detected. The setup will also check for the correct Visual C++ runtimes, and install the required versions.

It's also advised to install the latest version of DirectX:

<http://www.microsoft.com/downloads/details.aspx?displaylang=en&FamilyID=2da43d38-db71-4c1b-bc6a-9b6652cd92a3>

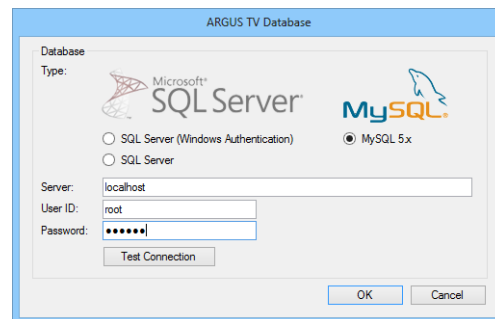
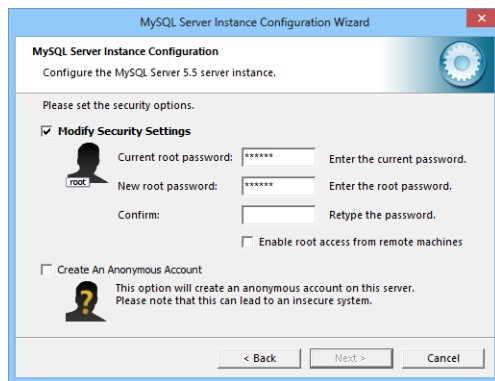
### 4.2 MediaPortal

If you want to use [MediaPortal TV Server](#) and/or the MediaPortal client, **ARGUS TV** assumes that they have already been installed before installing **ARGUS TV**. If this is not the case, you won't be able to select MediaPortal TV Server or the MediaPortal client option during the **ARGUS TV** setup.

### 4.3 Database

**ARGUS TV** needs a database to store its information, and offers you to use *Microsoft SQL Server (Express) (2005/2008/2012)* or *MySQL 5.x*. So make sure you have a database server ready for use. We recommend to use *Microsoft SQL Server (or Express)* as it gives the best performance.

Note for MySQL users: When you install MySQL server on your machine, make sure you remember the password you entered during setup since you will need that password afterwards when setting up **ARGUS TV**'s connection to the database:



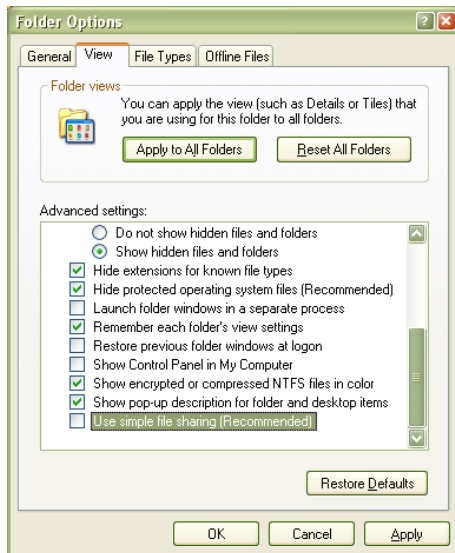
ARGUS TV connecting to database

## 4.4 Recordings share(s)

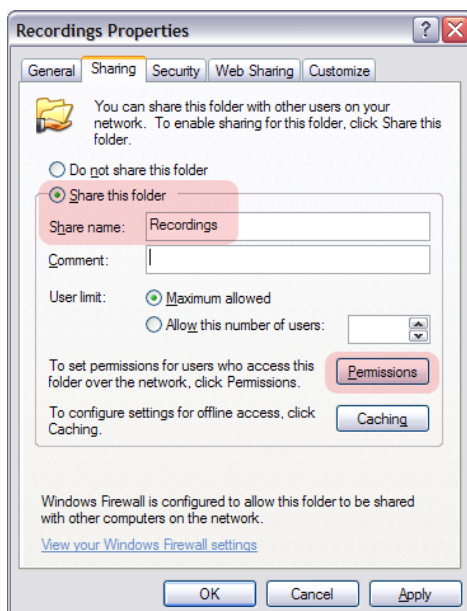
### 4.4.1 Windows XP

We advise to setup your shares before installing **ARGUS TV**. To setup your recording share(s) correctly, proceed as follows:

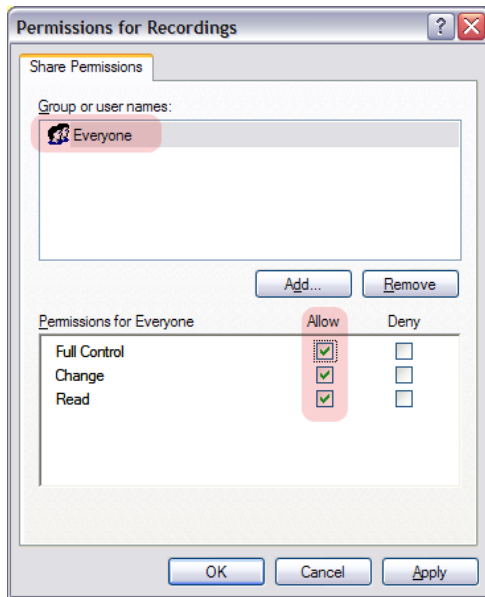
First, check whether simple File sharing is turned off, so you can adjust the sharing permissions:



That done, go to the recordings directory that will be used by your recorder of choice, click the right mouse button and choose *Sharing and Security...* This will bring you to the *Properties* windows on the *Sharing* tab:



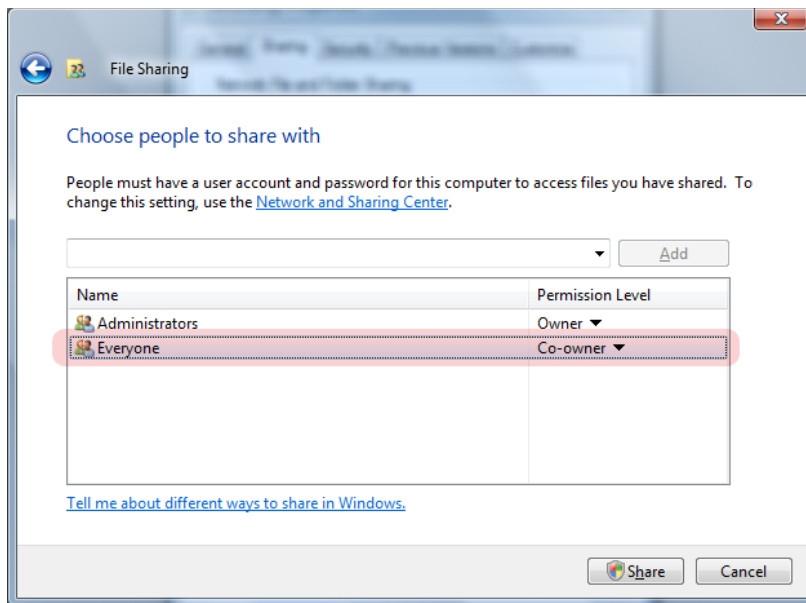
Here you click *Share this folder* and optionally edit the share name. Then click the *Permissions* button to get to the following window:



Easiest here is to simply give “Everyone” full control. If you prefer this, you can add the account you will be running the **ARGUS TV** core services under (SYSTEM by default) instead and give that full control.

#### 4.4.2 Windows Vista/Windows 7/Windows 8

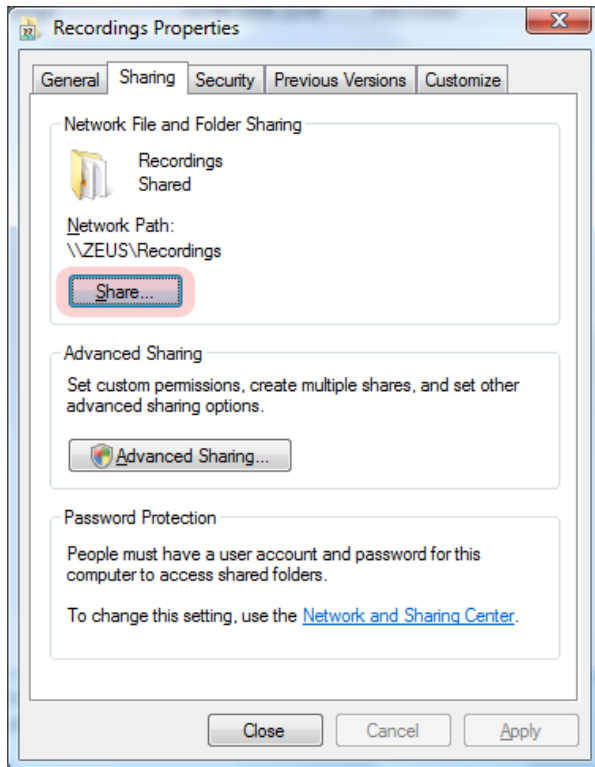
Go to the recordings directory that was set up for your recorder of choice, click the right mouse button and choose *Share...* This will bring you to the *File Sharing* window:



Add “Everyone” to the list and choose *Co-owner* as the permission level. If you prefer this, you can make the account you will be running the **ARGUS TV** core services under (SYSTEM by default) co-owner instead. Finally hit *Share* to apply the settings and close the window.

Note that you can also get to this window from the directory's *Properties* windows and its *Sharing* tab:





**Very important:**

Make sure that the account under which you will run the **ARGUS TV Scheduler** service (and TVService.exe if using Media Portal) has full rights to the share, since **ARGUS TV** will need to create directories and rename files here. You will be able to specify the account for the Scheduler service during setup. You can change the account after setup: use *Run*, “services.msc” and change account by right clicking the service, and clicking the log-on tab.

Setting shares and using an account that can share are particularly important if you plan to save recordings to a shared folder over a network. The SYSTEM (default) is a local account and will not be allowed access to a share on the network. Also, the chosen account must have a password.

Once installed, **ARGUS TV** allows you to test the shares from its Scheduler Console (see topic “Testing the Recording Shares”).

## 4.5 Web Access

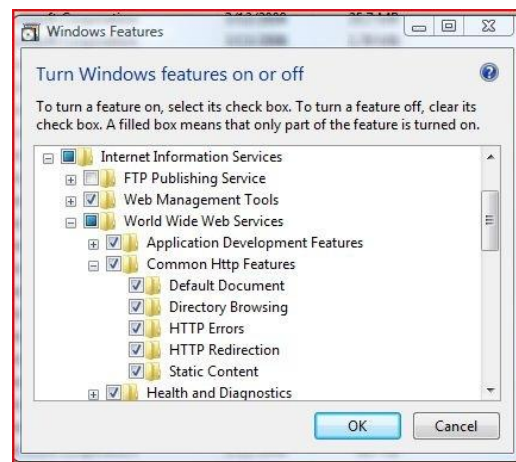
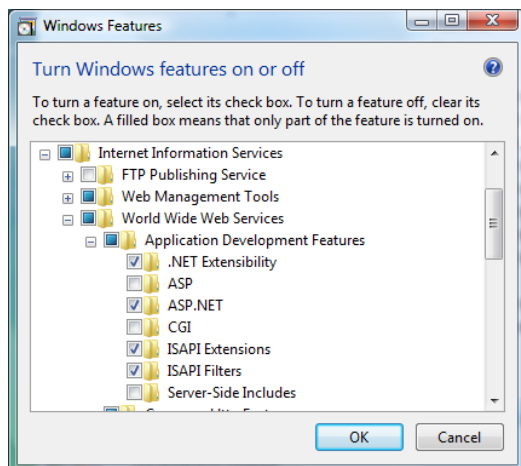
To be able to use the **Web Access** client, you have two options. You can use the built-in Ultidev Web Server which will automatically be installed by **ARGUS TV** setup (by far the easiest option), or you can use a pre-installed Microsoft IIS 5 or higher.

Important note for IIS installations on Vista/Windows 7/Windows 8:

The installer will have to create the **ARGUS TV** virtual directory in IIS. To successfully run this install on Windows Vista, Windows 7 or Windows 8, the IIS 7 settings must be verified, and set as shown below:

To enable this setting, do the following:

- Open "Control Panel" and ensure "Control Panel Home" is the current view.
- Click the "Uninstall a program" link from the Programs menu item.
- Select "Turn Windows features on or off" from the Tasks menu.
- Expand the "Internet Information Services" node, followed by the "Web Management Tools" node.
- Make sure that the appropriate checkboxes are checked:

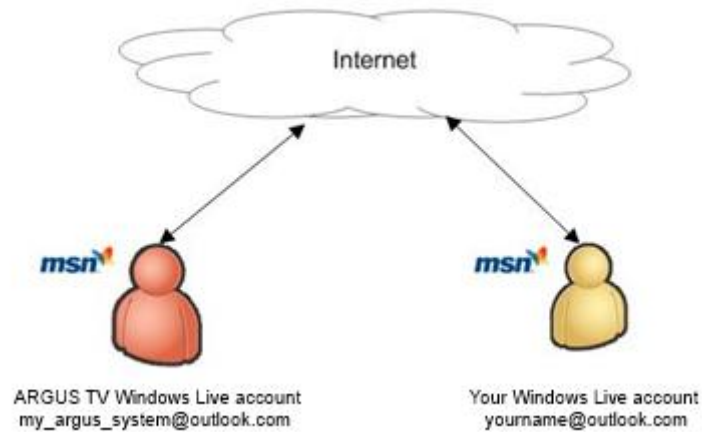


- Static Content (red bordered dialog) must be checked, otherwise images, css files etc won't be handled.

## 4.6 Messenger

The **ARGUS TV Messenger** allows you to chat with your **ARGUS TV** system, so you can ask what it is currently doing, consult the upcoming recordings or the TV guide, get notified of alerts, etc...

To set this up, you will need two Windows Live (MSN) accounts. Your own personal account (which you may already have) and a new dedicated Windows Live account for the Messenger service. You can create Windows Live accounts [here](#). Make sure both accounts are activated and can log in to Windows Live Messenger. For configuration details, check the [Messenger](#) section.



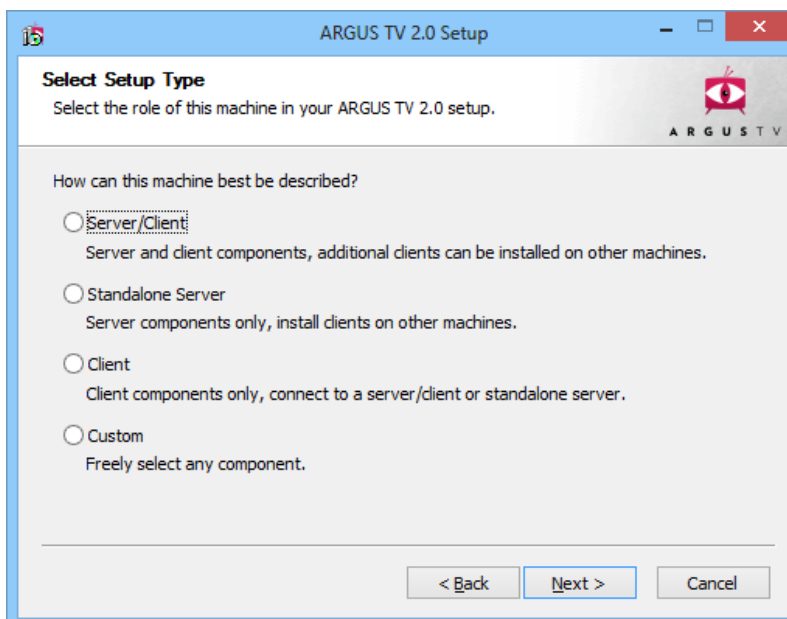
## 5 Installation procedure

Launch “ARGUS TV Setup.exe”. If you run under Windows Vista/Windows 7/Windows 8, a user account control popup screen will popup to warn you that the setup needs access to your system. Click the allow option. Note for details about uninstalling a previous installation, we refer to the uninstall section of this document.

You enter the setup in the welcome screen:

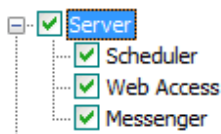
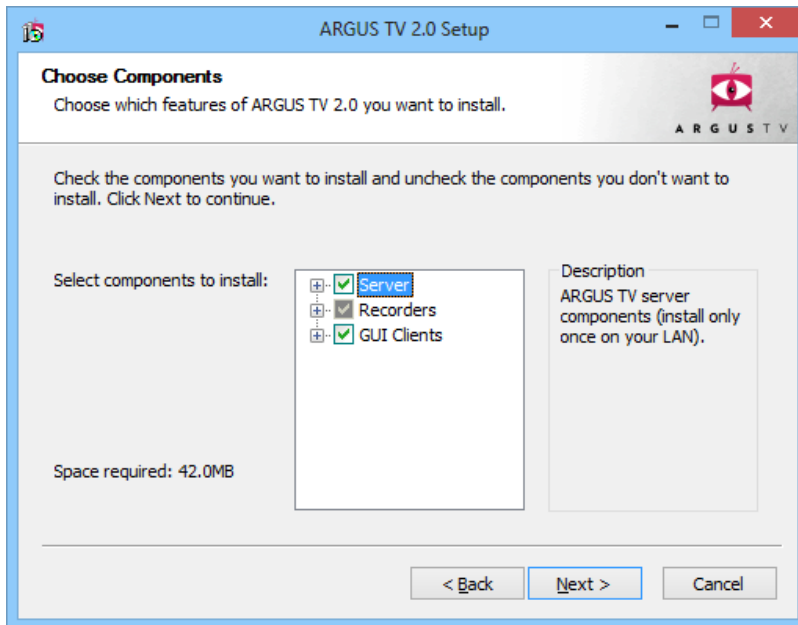


Click “Next”, and you will be able to read the License Agreement. Read this carefully, and if you agree, click on the “I Agree” button. This will bring you to the “Select Setup Type” page:



Pick the situation that best describes the machine you are running the setup on and click “Next” to go to the “Choose Components” page. Depending on the option you select in the Setup Type dialog, different components will be preselected for you.

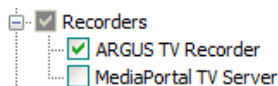
In the choose components dialog, you can see a description of the option when you hover the mouse over each option (the label of the checkboxes).



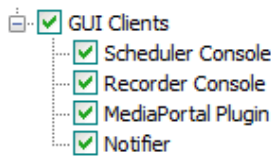
**Server/Scheduler** is the **ARGUS TV Scheduler** Windows service that is responsible for the core scheduling functionality of **ARGUS TV**. It will handle the import of TV guide data, schedule your recordings etc. This should be installed only on one machine, your server or master (see [3. Configurations](#)).

**Server/Web Access:** Install this on your server to enable access to **ARGUS TV** over the internet.

**Server/Messenger:** Install this on your server to enable chatting with your **ARGUS TV** system using MSN or Windows Live Messenger.



**Recorders:** These are the **ARGUS TV** recorders that will connect **ARGUS TV** to the recorder of your choice. The native **ARGUS TV Recorder** will be selected by default -- be aware this recorder/tuner will only work with digital broadcasts (DVB-C, DVB-S, DVB-T or ATSC/QAM).



**GUI Clients/Scheduler Console:** The Scheduler Console allows you to do all administrative work on the **ARGUS TV Scheduler**.

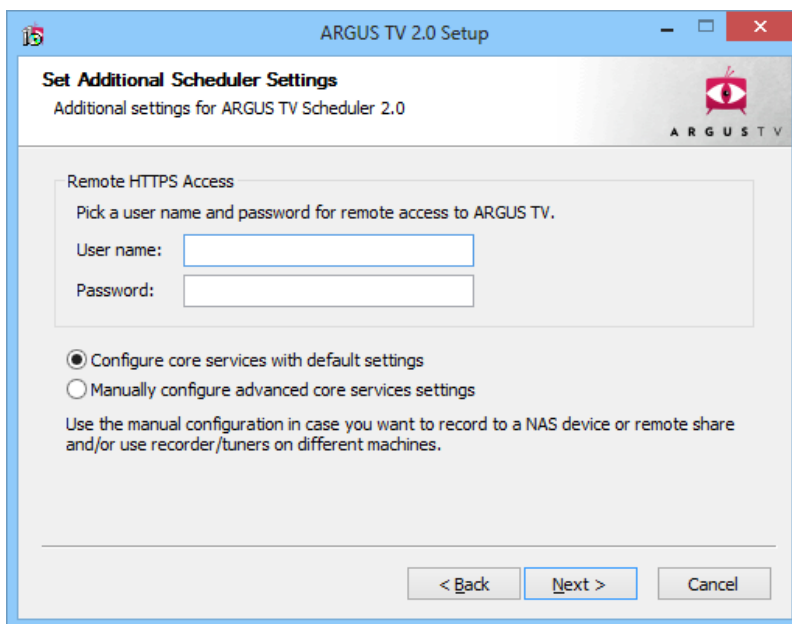
**GUI Clients/Recorder Console:** The Recorder Console allows you to configure the **ARGUS TV Recorder**.

**GUI Clients/MediaPortal Plugin:** Using this plugin you can browse the TV guide, watch live TV, do basic scheduling and watch your recordings from within MediaPortal.

**GUI Clients/Notifier:** system tray application that allows you to follow what happens on your server.


Choose the options that are of use to you, and click next.

This brings you to the “Set Additional Services Settings” screen where you are requested to enter credentials to be used for remote HTTPS server access. You can choose to configure the core services with the default settings, or to manually. When you store your recordings on a different machine than this one, you need to select the manual configuration so that you can enter specific credentials for the core service, so that it can access the recordings share to read/write your recordings.

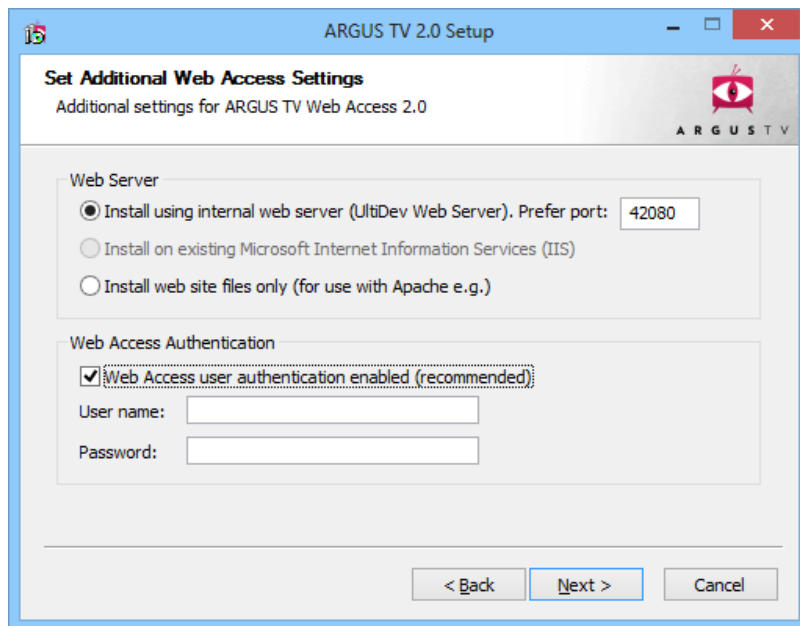


If you choose to install the server core services and the manual configuration, you will have the possibility to enter the credentials under which this service will run, along with the service network ports, which we recommend to leave at the proposed defaults:

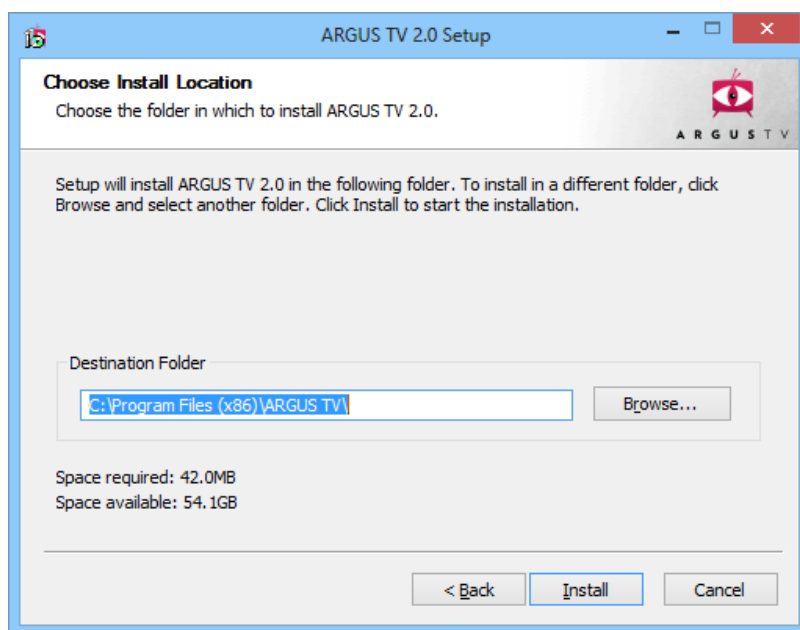
Application Management	Processes installation, removal, and enumeration requests for software d...	Manual	Local System
ARGUS TV Messenger	Allows communication with ARGUS TV using Windows Live Messenger.	Started	Automatic
ARGUS TV Recorder	Tune and record television capture cards	Started	Automatic
ARGUS TV Scheduler	Advanced scheduling and recording engine for TV and radio programs	Started	Automatic
ASP.NET State Service	Provides support for out-of-process session states for ASP.NET. If this se...	Manual	Local System

 This account is the account that should have full access to the shares where the recordings will be stored. **ARGUS TV** will copy, move and rename files in this folders, so full access is needed. If you are unsure about this screen, leave the credentials blank, so the default will be used.

If you choose to install Web Access, you will have to select which web server to use and enter the credentials:

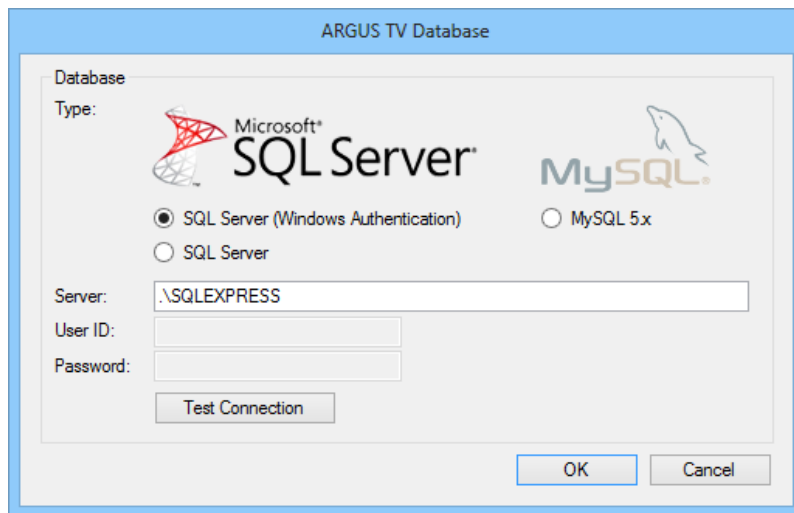


After clicking “Next”, choose a destination folder:



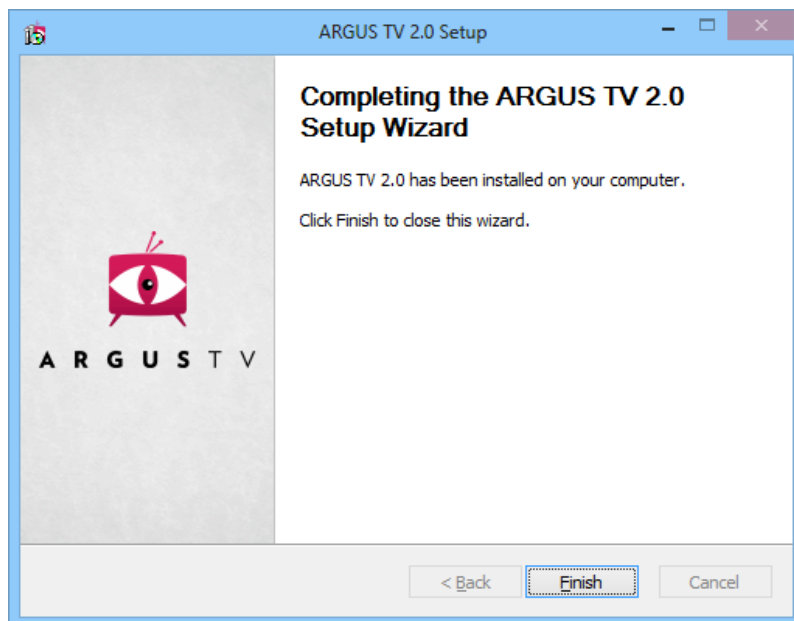
After you click “Install”, the installation starts. The extracted and installed files are listed. A dialog will popup to request credentials for the database connection the **ARGUS TV** service should use. Choose Windows Authentication (recommended) or enter the user ID and password, and test the connection with the “Test Connection” button:





When the installation succeeds the finish dialog will be shown, informing you that **ARGUS TV** has been successfully installed on your system. When something goes wrong, everything will be rolled back automatically. Maybe some prerequisite is not fulfilled.

You can run the setup on other machines on your network, just make sure you only install the server components once. Clients can be installed on as many machines as you like.



## 6 Quick check of the installation

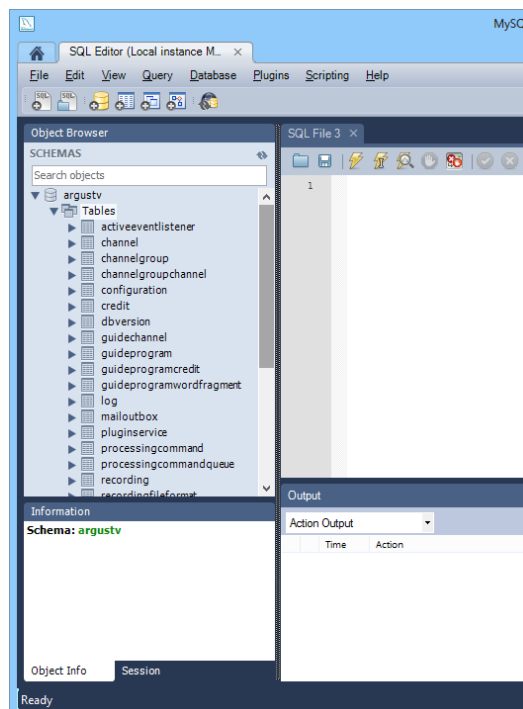
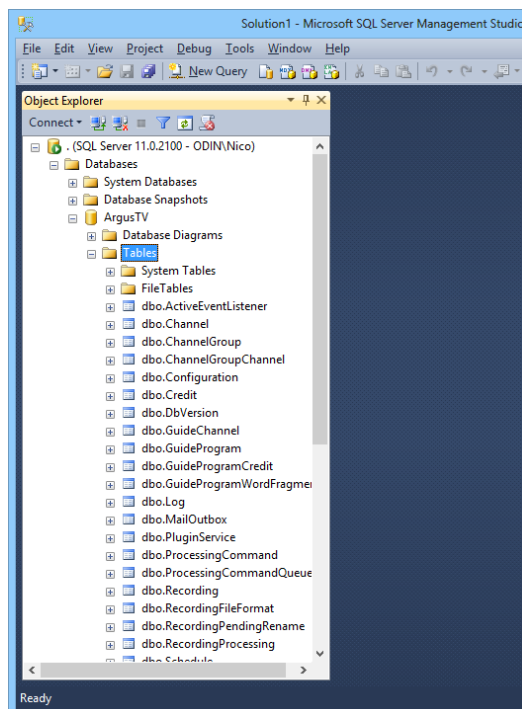
### 6.1 Services

You can check all services in “services management console”. Click Windows start button, select run, and type “services.msc”. The most important installed service is the “ARGUS TV Scheduler” service. If this service is not running, nothing will work, since all communication goes through this service. Also verify that your recorder service(s) is(are) started (of you have any). If not start them manually, and if they cannot be started, check the event-log to find out the reason (maybe the account entered during install wasn’t allowed to run services...).

Application Management	Processes installation, removal, and enumeration requests for software d...	Manual	Local System
ARGUS TV Messenger	Allows communication with ARGUS TV using Windows Live Messenger.	Started	Automatic
ARGUS TV Recorder	Tune and record television capture cards	Started	Automatic
ARGUS TV Scheduler	Advanced scheduling and recording engine for TV and radio programs	Started	Automatic
ASP.NET State Service	Provides support for out-of-process session states for ASP.NET applica...	Manual	Network Service

### 6.2 Database

If SQL Server or Express is your database server, then you can use *SQL Server Management Studio* to have a look at the “ArgusTV” database. For MySQL, you can use the *MySQL Workbench*.



These are just sample images, the database content might have changed in the meantime.

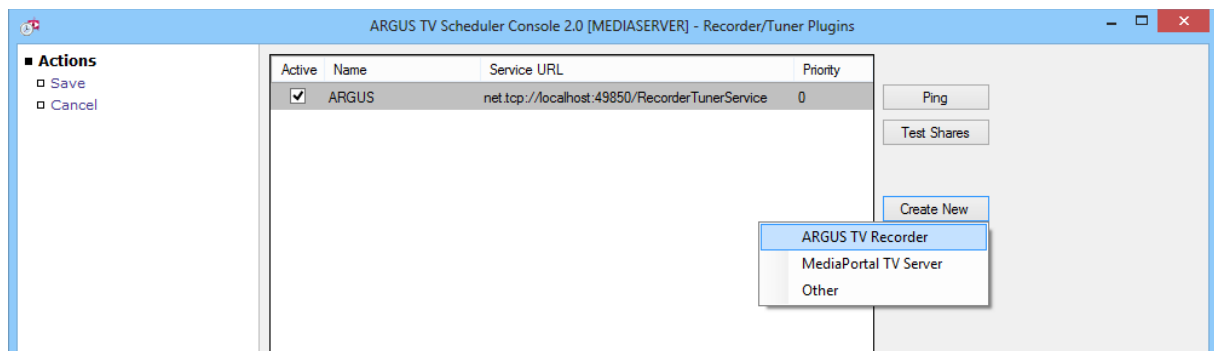
## 7 Configuration

### 7.1 Add your Recorder

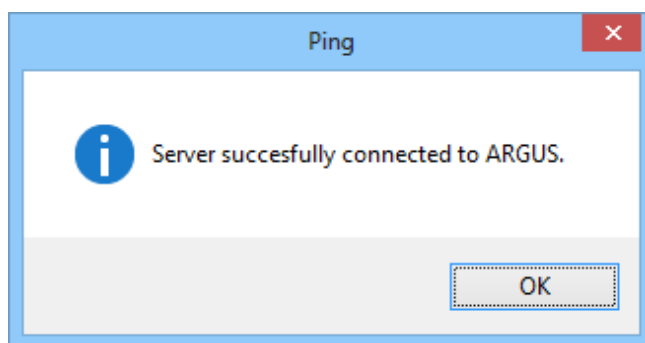
Installing your Recorder was only the first step. The next step is to add your recorder to the **ARGUS TV** configuration, so **ARGUS TV** can actually use it to record or stream programs. This configuration is done in the Scheduler Console. Startup the console, and navigate to **Administration -> Recorders** using the navigation bar on the left side.

If you installed **ARGUS TV** with its built-in recorder, it will be automatically configured for you, so you can immediately proceed to Pinging it or testing the shares (see below).

On this page, we can add, enable and disable Recorders. To add the recorder of your choice, click the “Add” button. A popup menu will appear with all available recorder types. Your selection will be added to the list. The name, service url and priority can be edited in the grid. We recommend to leave the service url to the proposed default. Using the priority, you can define which recorder is preferred by **ARGUS TV** when it is scheduling programs.



Using the “Ping” button, you can test whether the **ARGUS TV** server can communicate with the configured recorder. If the ping succeeds, you will see a message-box as shown below:



Once all your recorders are added and configured, click save to persist your configuration.

**⚠ Remark :** When adding a Mediportal TV Server recorder, you will first have to enable the **ARGUS TV** plugin in MediaPortal TV Server and make sure TVService is running, otherwise the ping will fail. See the section Specific Settings/Mediportal for more details.

How many recorders do I need to add, suppose I have one server with four cards in it? The answer is just one. You could consider the recorder as a bridge between **ARGUS TV** and another system. So you only need to add one of them for each system you want to use for recording.

## 7.2 ARGUS TV Recorder

### 7.2.1 The Recorder Console

All ARGUS TV Recorder configurations are done in the Recorder Console. In the following sections, we will go through each step to configure your recorder/tuner. So fire up the console to start the configuration:



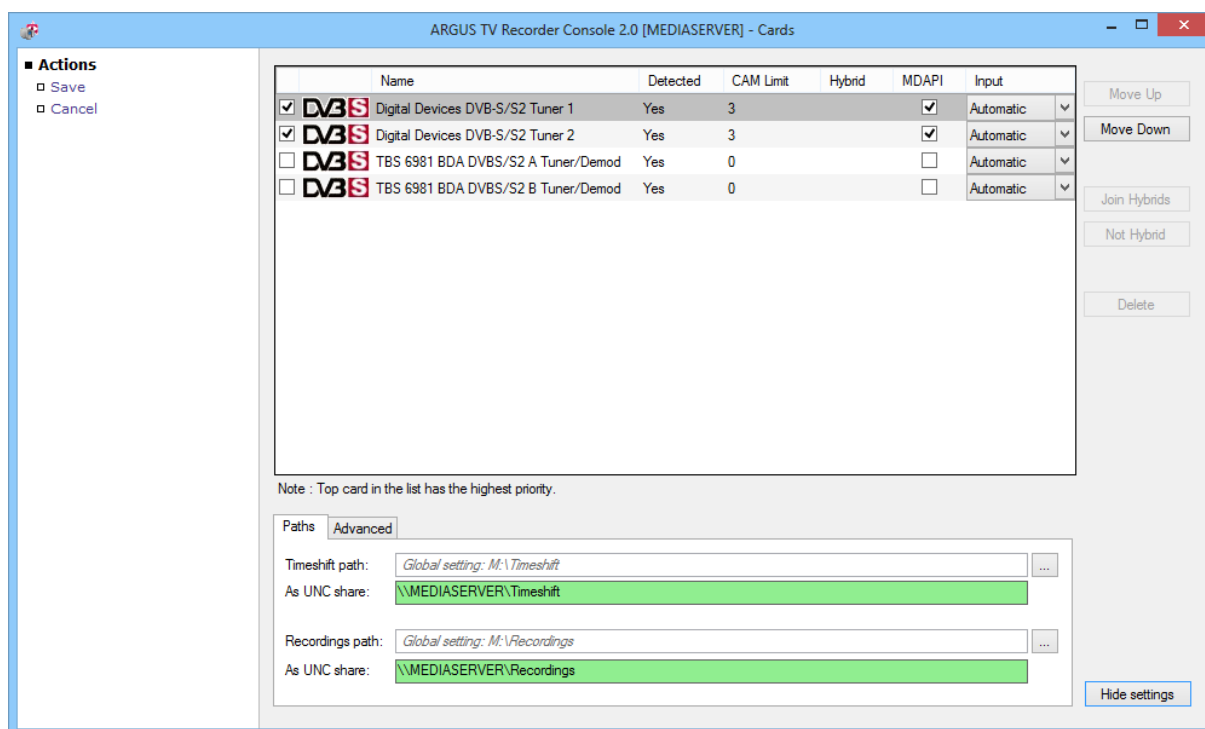
### 7.2.2 Detected cards

In the cards screen, you get an overview of the cards installed and present in your machine. You can enable or disable cards, and also set the CAM limit for decoding encrypted channels. The limit determines how many programs the card can decrypt at the same time; given the card has a CAM module installed. You can also specify whether a card will be using MDAPI (multi dec API).

For ATSC cards (only), an input type can be specified using the dropdown in the list.

Cards that are indicated as not detected can be deleted.

The priority of the cards can be changed by moving them up or down in the list. As indicated below in the dialog, the higher the cards position in the list, the higher the priority of the card.



At the bottom of the screen, use the button “Show settings” to open and change individual card settings. Although the global settings (see settings panel) will apply for all cards, you can change them here for each card individually in this screen.

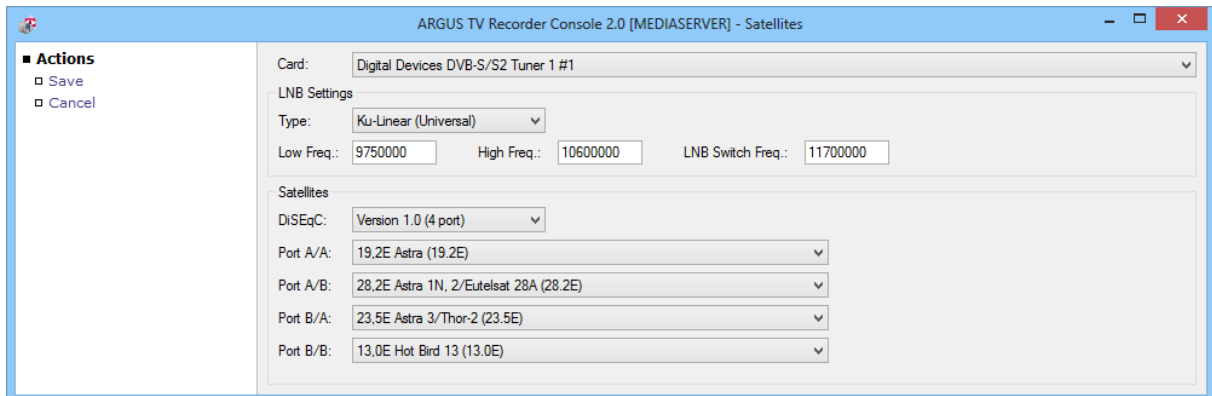
On the Paths tab, you can define the folder to use for time-shift and recording files.

On the Advanced tab, you can specify whether the graph must be paused or reset when the card is idle.

*Remark:* You don’t necessarily need to touch these settings. They are provided for flexibility. In most cases they don’t need to be changed.

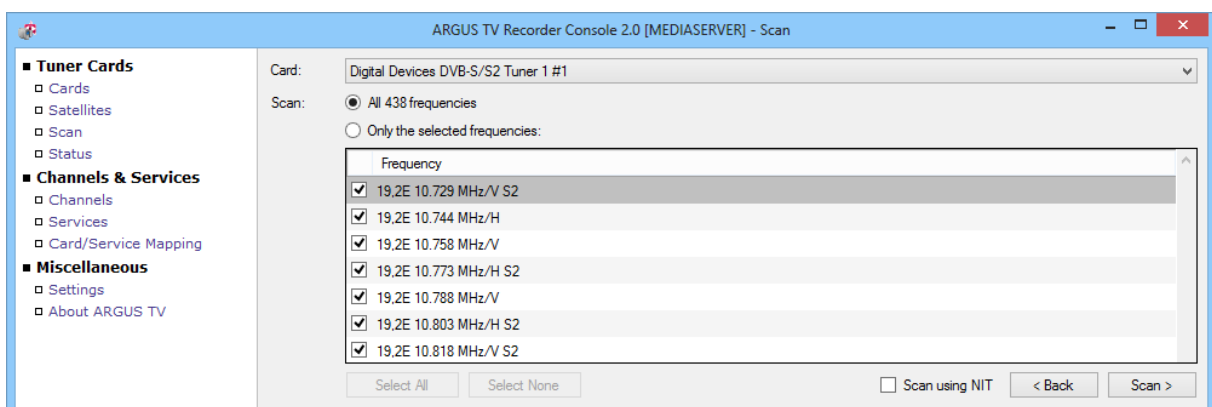
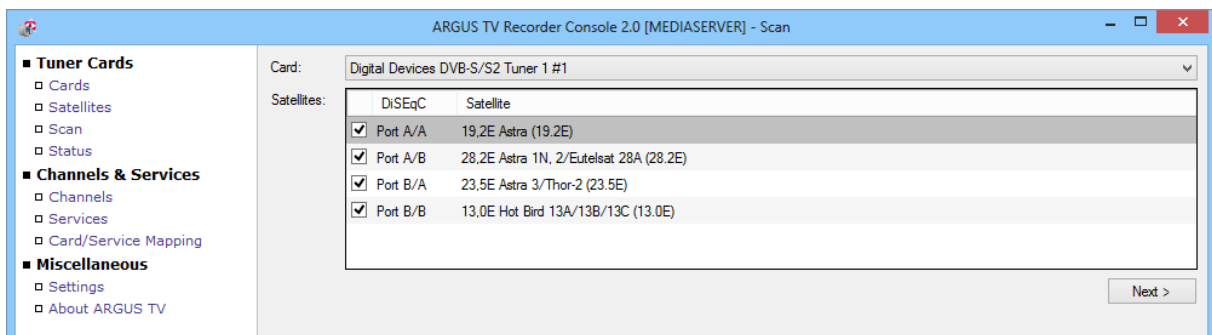
### 7.2.3 Satellites

If you have DVB-S cards in your system, then you need to configure satellites connected to each of those cards. Select the LNB type (mostly Ku-Linear in Europe), or enter the LNB frequencies manually. Next, select your DiSEqC configuration, and choose one or more satellites connected to the card or switch. Make sure you do this for each DVB-S card. Save your configuration.

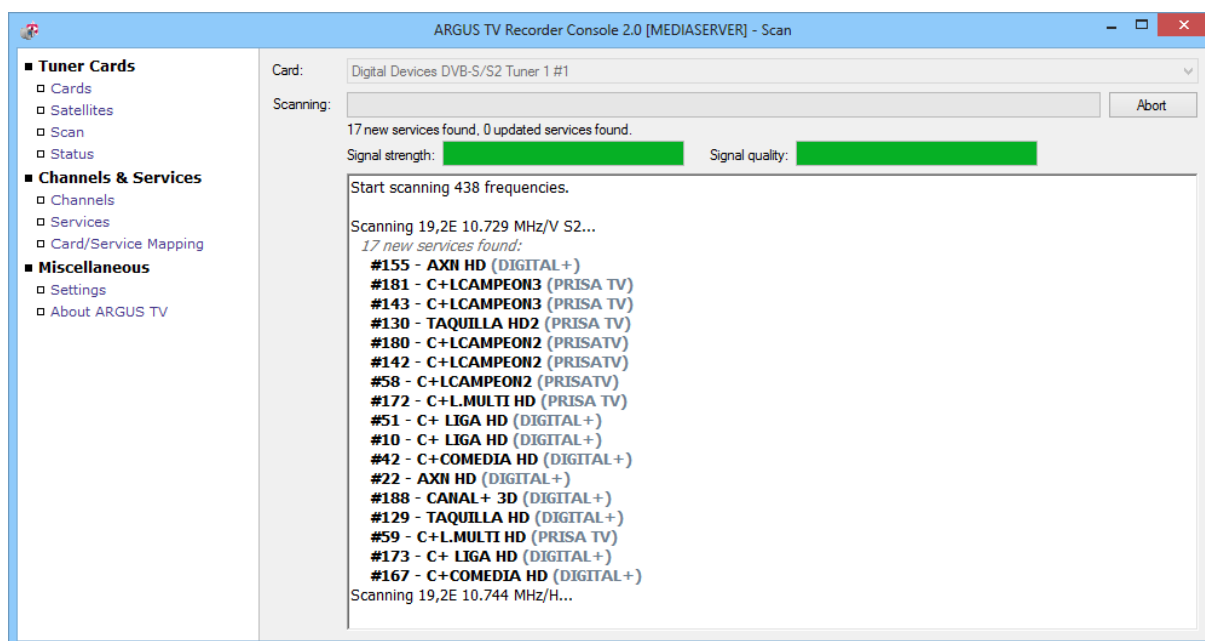


### 7.2.4 Scanning

We are now ready to scan the cards in the system for (broadcasted) services. Depending on the type of card you select, different options will be available. For DVB-S you can select one or more satellites, for DVB-T, DVB-C and ATSC you select a region. Clicking Next, brings you to a frequency list, where you can optionally select all or a set of specific frequencies to scan.

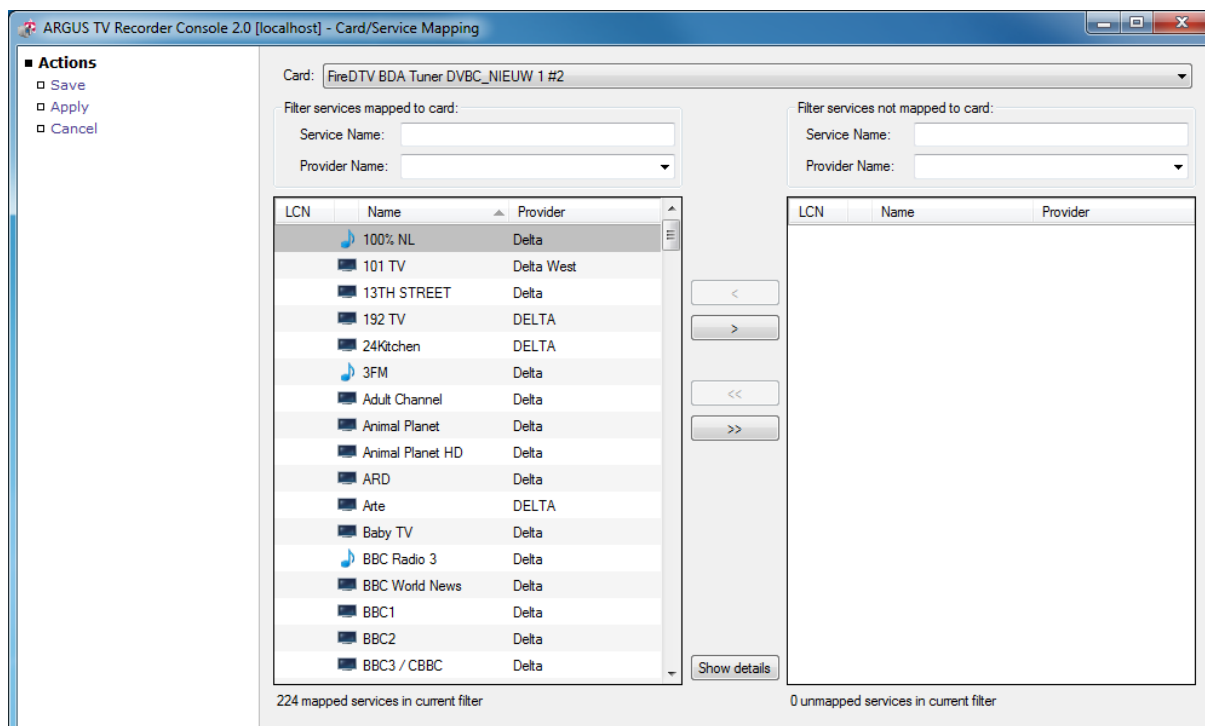


When the scanning has started, feedback about the found services is shown in the panel. At any time you can abort the scanning using the abort button.



⚠ If your system contains similar cards that are connected to the same signal source, for example two DVB-T cards, you can scan using one card, and then map the scanned services to the second card. More about that in the section card/Service mapping.

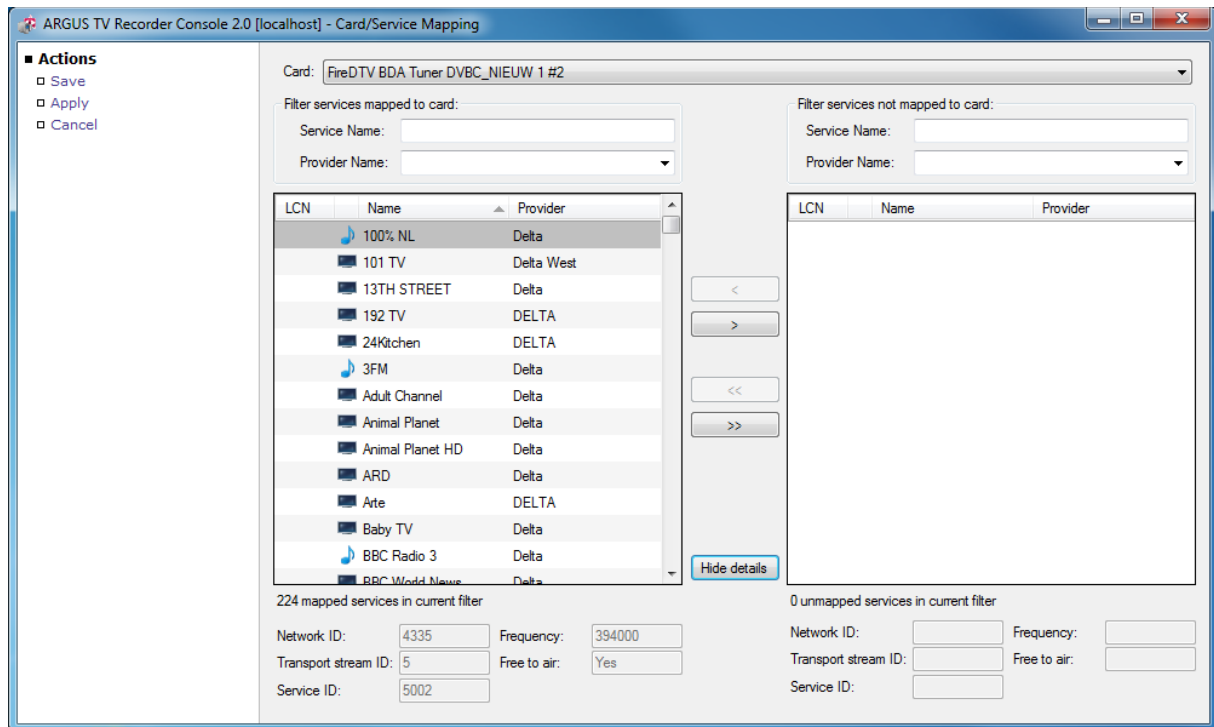
## 7.2.5 Card/service mapping



In this panel, you can map services to cards. This is very useful if you have identical cards in your system, e.g. two DVB-S cards. You can scan for services on the first card, and then map all the

scanned services to the second card without having to scan that second card, given they are connected to the same satellites, and so receive the same services.

In the dialog you can use filtering to find a specific service, by typing in a service name or selecting a provider name from the dropdown. When many results are found, the text "All x services in the current filter (use >> button to map services)" will appear. Using the << or >> buttons you can map or unmap all the services in one go. You can also find a smaller set of services, and map/unmap those. They will be marked in blue font in the (filtered) list. Large sets will be saved (once you confirm your action) immediately, for smaller sets use the save button.

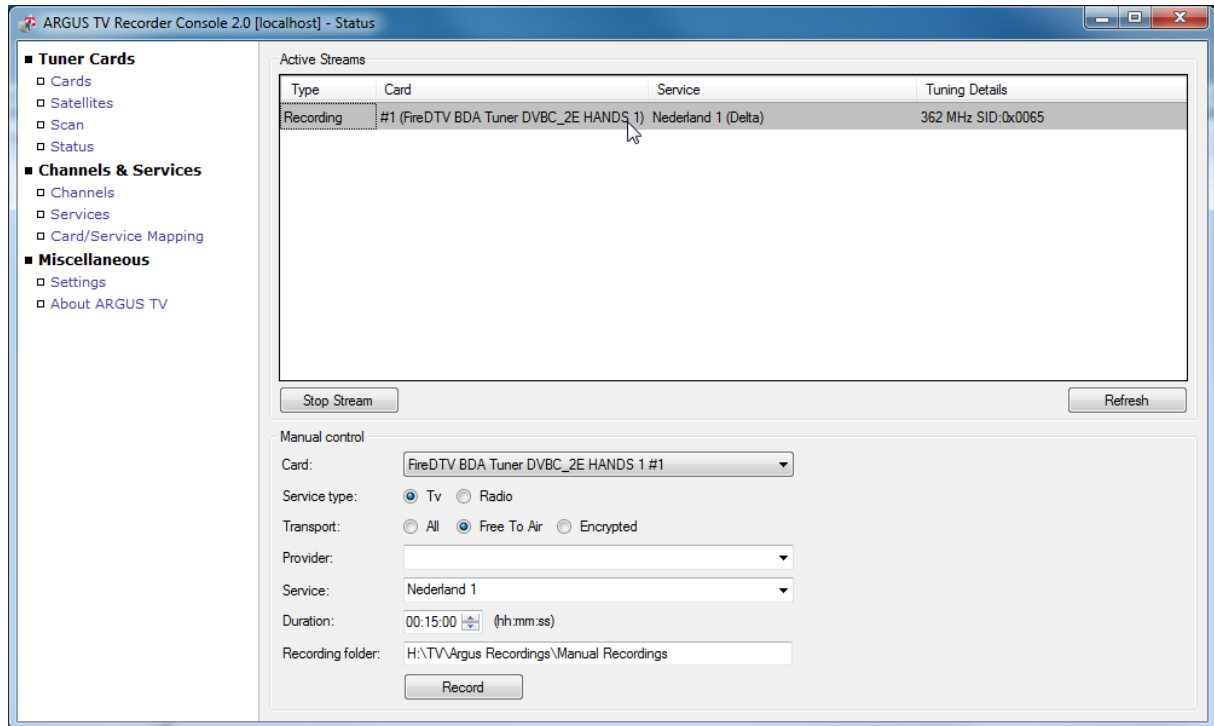


Service details are shown at the bottom of the panel, and can be hidden using the Hide/Show button.



## 7.2.6 Status

At this point, we have scanned our cards for services. Before we link them to channels, let's see if we can record these services. We can do this testing in the status dialog. Start by selecting the card to use, and then choose a free to air service to start with. Select provider and service, and hit record. The service should be recorded, and listed in the active streams. Double click the line to open an explorer in the folder the stream is recorded in. Shortly check the recording, and then click stop stream.



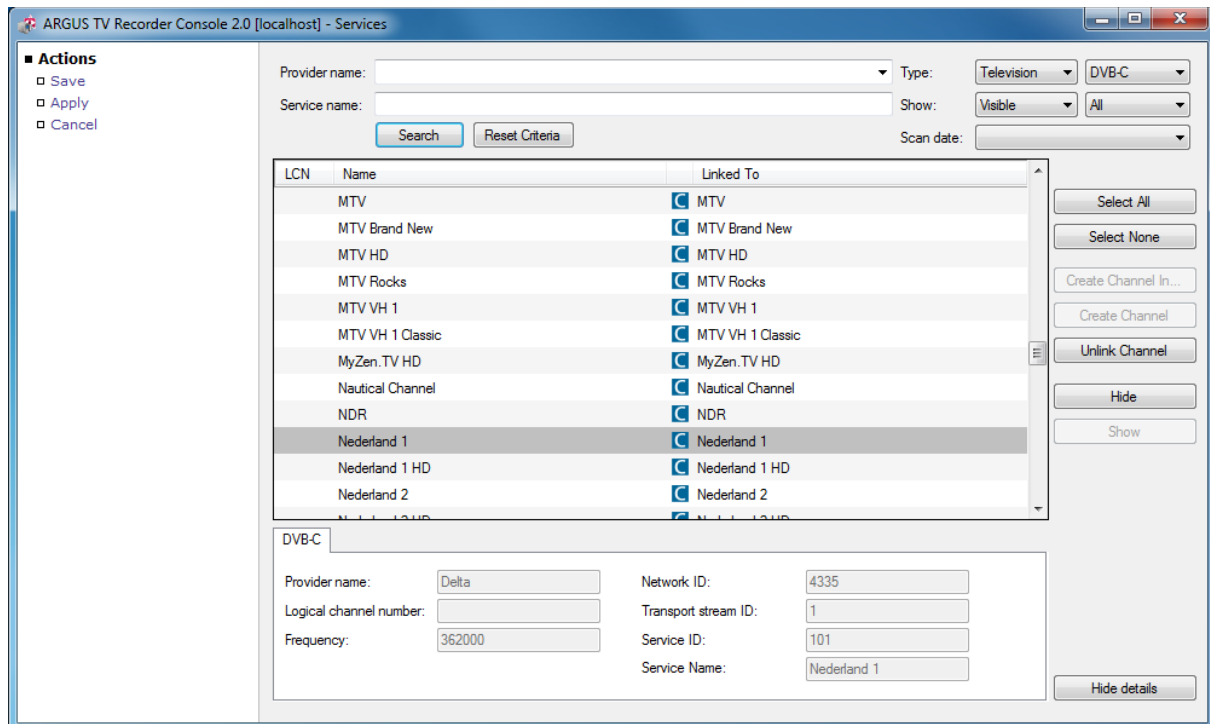
## 7.2.7 Linking Services to channels

In **ARGUS TV** we will be using channels. So we will need to connect scanned services to channels. If your system combines different cards, it is possible that a service, say "BBC one" is captured in different ways, for example one via DVB-T and one via a DVB-S card. These "BBC one" services will be linked to a single "BBC one" service. Services coming from the same type of cards however cannot be linked. (e.g. from two different DVB-S cards)

The linking between services and channels can be done in two ways. The first one is using the services dialog where we start from services; the second way is by using the channels dialog where we start from existing channels. Let's have a look at each one in detail.

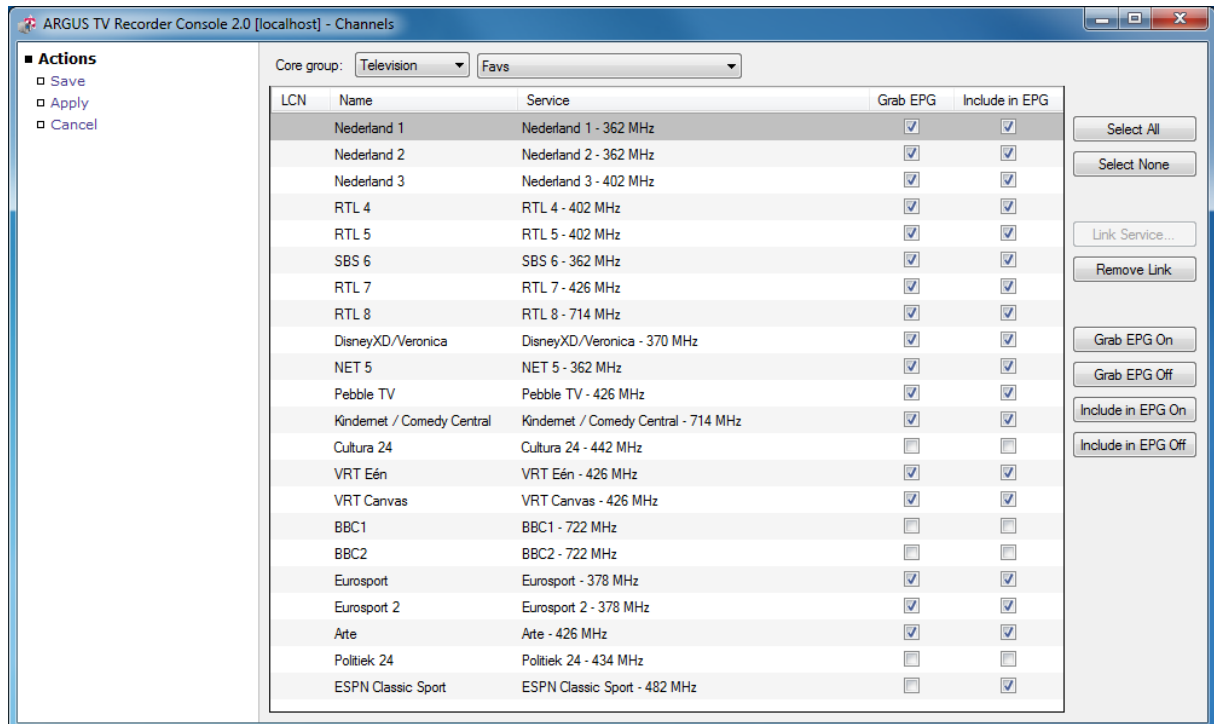
### ***From services to channels:***

Open the services dialog, and select at least one service that is not linked. Click the "create channel in.." button, and select the group (in **ARGUS TV**) where you want the channels to be created in. Optionally, you can create a new group using the "this group" option, and type a name. As a result the group will be created in **ARGUS TV**, and the selected service will have a linked channel which will be placed in the selected group. For the remaining services, you can simply double click the row in the grid and channels will be created in the same group. This way, it takes only a few seconds to create all channels in **ARGUS TV**.



### From channels to services:

This will mostly be used when a channel already existing in ARGUS TV, needs to be linked to another or new service. Open the channels dialog, and select the channel you want to link. If it was linked, use the unlink button to remove the link. Clicking the link button will open a dialog where you you can search for the matching service. Closing the dialog using the OK button will create the link.



### 7.2.8 Grabbing EPG

Once we have setup the channels, we can activate EPG-grabbing for the channels of our choice. Open the channels dialog, and check the corresponding checkboxes in the grid Grab EPG column (see above).

Remark: You can also provide **ARGUS TV** with guide data by using an XMLTV file, or by using the Guide Importer tool. Using the appropriate settings, you can specify in **ARGUS TV** which source has priority (see [Importing TV guide data](#)).

### 7.2.9 Status dialog

This dialog shows what each card is currently busy doing (if anything) and is fairly self explanatory. You can see if a card is busy grabbing EPG. The Stop Stream button allows you to intervene manually, and stop the selected stream in the grid. As already stated, manual recordings can be launched here for debugging/testing.

### 7.2.10 Settings

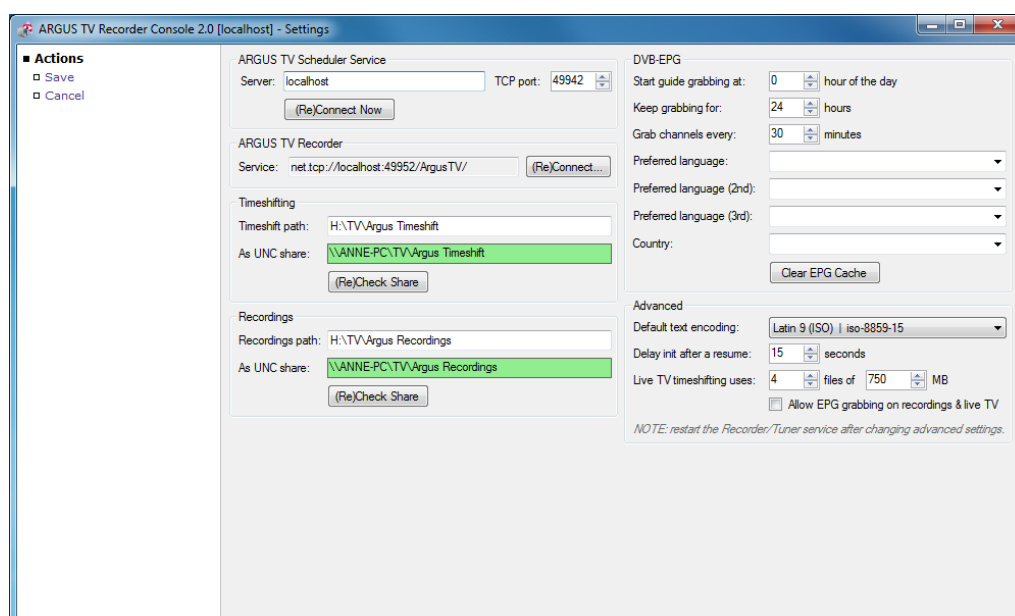
The settings panel contains settings for:

- Server: the **ARGUS TV** server to connect to. Use "(Re) Connect Now" button to apply.
- Recordings path: The path where recording files will be written.
- Time-shift path: The path where time-shift files for Live-TV will be written.

**IMPORTANT:** Make sure that the paths entered in the above mentioned settings are properly shared, and accessible via a UNC path (e.g. \\yourmachine\\MyRecordings), even if you are working on the local machine (see [Recordings share\(s\)](#)).

- Settings for EPG grabbing

Allow you to specify when the grabbing should occur. This setting comes in handy when you want to avoid that your system grabs EPG during the time you are watch live TV (to get some performance gain for example).



### 7.2.11 Database

Argus uses a local database to store all its information about cards, services etc. This database (MS SQL Server Compact) is stored in a single file at the following location:

*C:\ProgramData\ARGUS TV\ ArgusTV.Recorder.sdf*

To take a backup, simply copy the file to another location. When you upgrade or re-install **ARGUS TV**, you will be asked whether you want to delete this database or not. If you choose to delete it, you will have to redo the complete ARGUS configuration, including scanning for services.

### 7.2.12 Config

ARGUS TV Recorder has two important configuration files (both in *C:\Program Files (x86)\ARGUS TV\Recorder*):

*ArgusTV.Recorder.exe.config* containing general settings, and

*ArgusTV.Recorder.CardHost.exe.config* containing specific card related settings.

### 7.2.13 Dumping streams (for troubleshooting only)

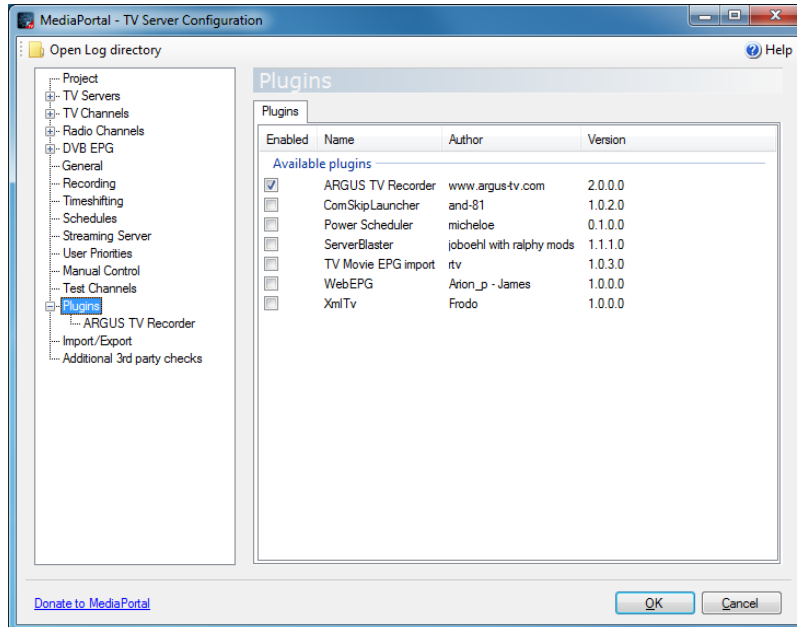
Sometimes when facing a particular problem, the **ARGUS TV** developers might ask for a dump of transponder. To do that, open the Status panel, select card, provider and channel, and keep the shift key down when clicking the record button. The recorder will then start dumping the entire transponder instead of recording only the selected channel.

Also, with the setting *DumpScanTSToFolder*, you can specify the folder where the recorder will create transponder dump files when scanning ( in *ArgusTV.Recorder.CardHost.exe.config*). Make sure that the folder you specify exists.

## 7.3 MediaPortal TV Server

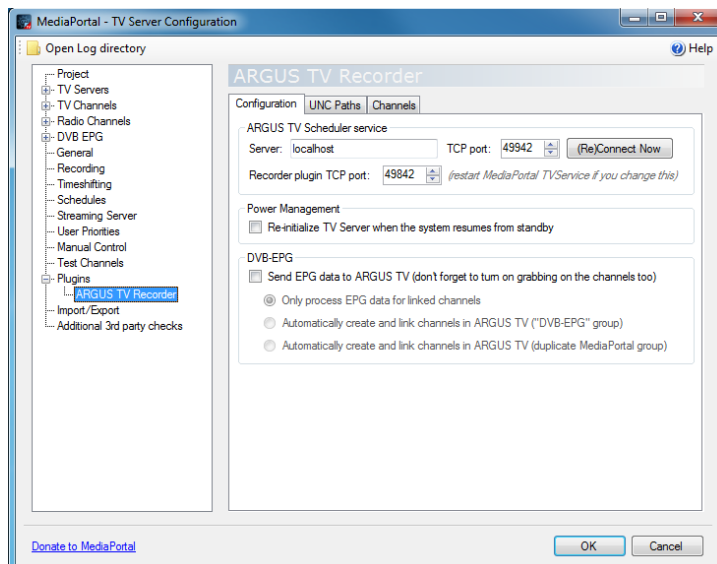
### 7.3.1 Enabling the ARGUS TV Recorder plugin

Before anything else, the **ARGUS TV Recorder** plugin should be enabled. Open the Mediaportal TV Server management console, and in the plugin section, check the corresponding checkbox.



### 7.3.2 Configuration

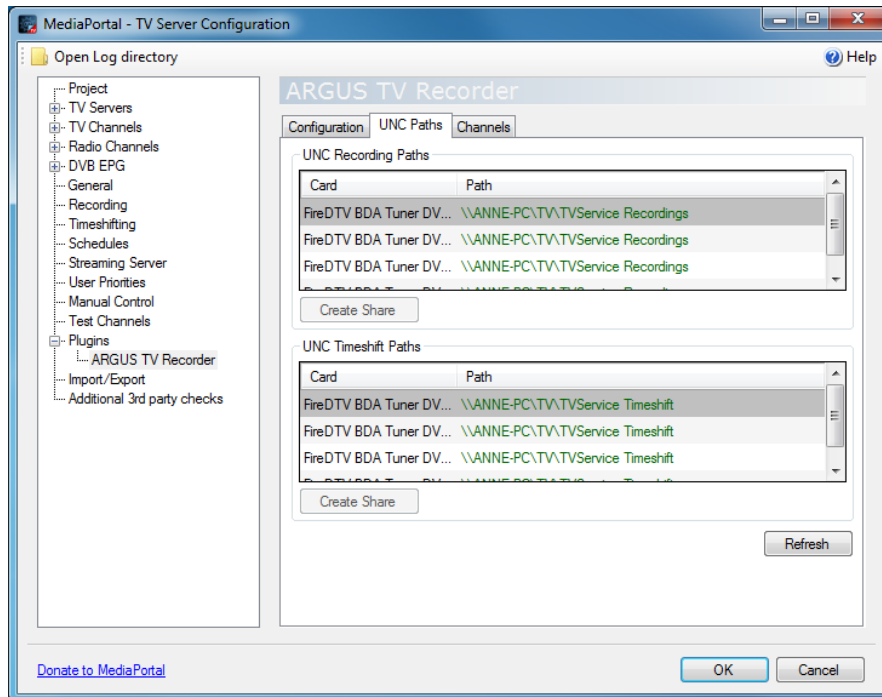
Once enabled, you will see a node called **ARGUS TV Recorder** appear under the plugins node in the left menu, select it so you can configure it.



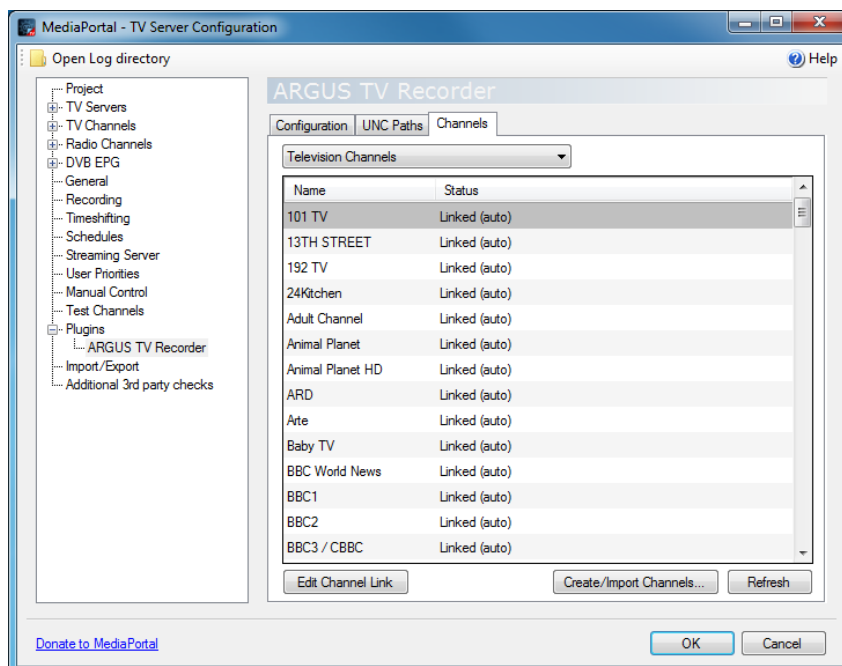
If you turn on DVB-EPG syncing the recorder/tuner will synchronize any EPG data grabbed by TV server back to **ARGUS TV**. By default this will only happen for channels that are linked! By checking the "Automatically create channels" checkbox all channels will always be synced, and TV channels will be created in ARGUS TV if they don't exist yet. Be careful though, you may end up with a lot of

channels in ARGUS TV this way. Also be aware that the initial synchronization can take a while. Restarting TVService after clicking OK may help speed things up.

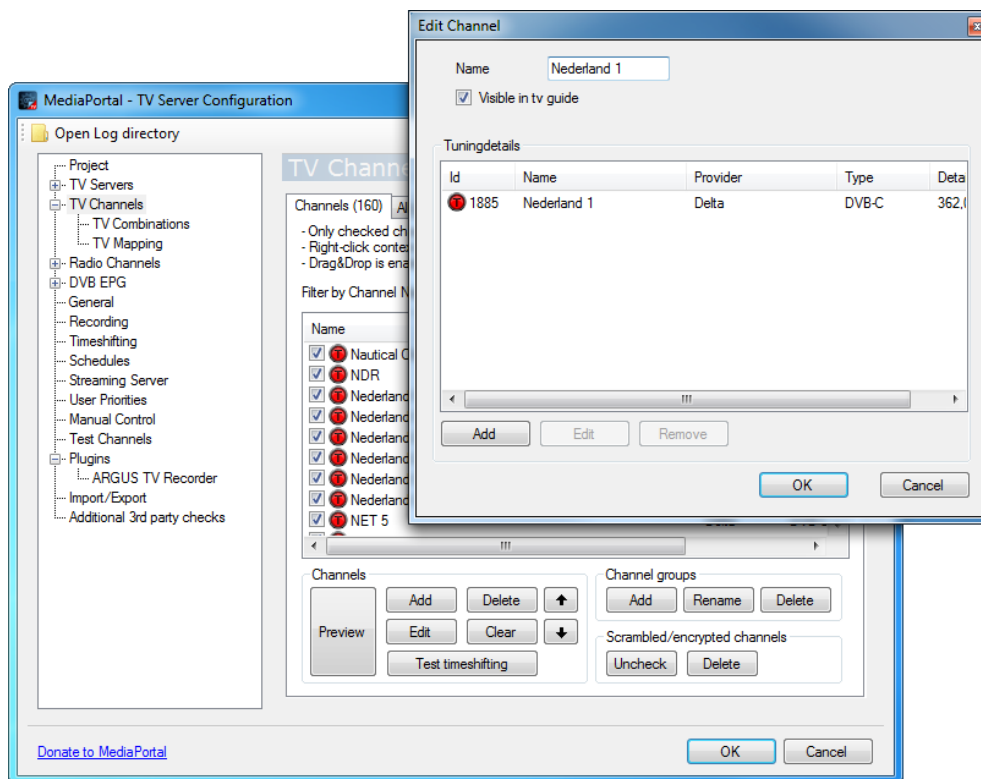
The tab “UNC Paths” allows you to make sure the UNC paths are correctly mapped for sharing the recordings with **ARGUS TV**.



The tab “Channels” allows you to map the channel names between MediaPortal TV server and **ARGUS TV**. If channel names do not match, you can change their name in one of both systems or link them manually using the “Edit Channel Link” button.



To change a channel name in MediaPortal, navigate to TV Channels, select the channel, and click “Edit”. The Edit channel dialog will open, type the new channel name, and click “OK”.





## 7.4 Importing TV guide data

**ARGUS TV** can't schedule recordings if it is not in the possession of up-to-date TV guide data.

### 7.4.1 A word about "channels"

In **ARGUS TV** there are two kinds of channels, guide channels and plain channels:

- Guide channels are low-level containers for guide data
- Channels are "*real*" channels, the ones you and I work with, possibly see in the guide, and schedule recordings on.

A channel is often, even almost always, linked to a guide channel. The guide channel *binds* the guide data to the TV channel so to speak. This means it's quite possible to have two channels linked to the same guide data. In Belgium we have a channel called "één" and they have an HD version of the exact same programming called "één HD". So in **ARGUS TV**, both "één" and "één HD" are channels and both are associated with the single guide channel "één".

If you import an XMLTV file **ARGUS TV** will check all channels in the file and auto-create guide channels if needed. And since a guide channel on its own is not so useful it will also auto-create a default channel for each guide channel it creates (using the same name as the guide channel).

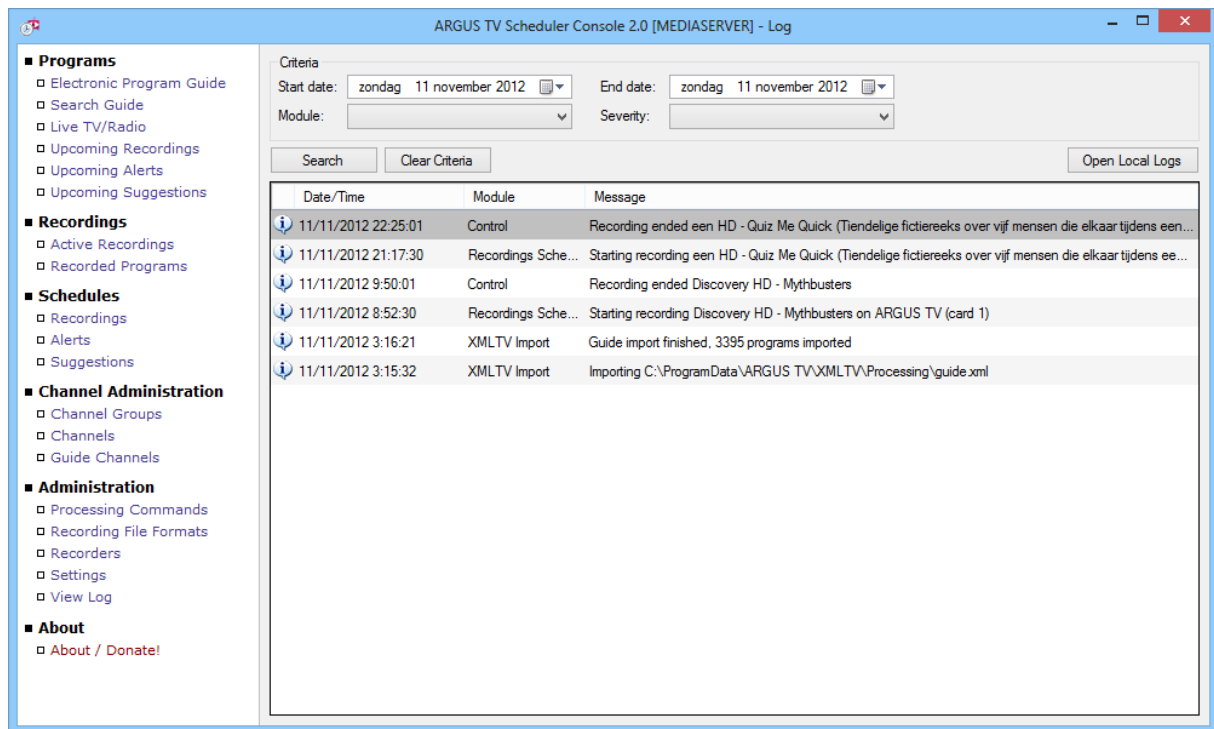
If you use Argus as recorder you will link your channels to services that are found on your digital cards.

If you use TV server, we need to bring on board a third kind of channel: the tuning channel. This is basically a channel known by the recorder. So for example, in MediaPortal TV server's case these are its scanned channels which contain tuning information for the cards they are scanned on and mapped to.

### 7.4.2 Importing using a XMLTV file

You can use the guide grabber of your choice, and drop the guide xml file in the right folder: `C:\ProgramData\ARGUS TV\XMLTV`. Mostly people schedule a job that will launch a batch file to start fetching the XMLTV file and dropping it at the proper location for import into **ARGUS TV**.

**ARGUS TV** will automatically import the data into its database. You can see feedback of this process in the log screen of the Scheduler Console:



### 7.4.3 Import using the Guide Importer tool

**ARGUS TV** offers a program called Guide Importer to import guide data from different providers, e.g. ClickFinder or Schedules Direct. There is a separate installation guide for Guide Importer, so refer to it if you need guidance.

## 7.5 Server Settings

ARGUS TV Scheduler Console 2.0 [MEDIASERVER] - Settings

**Actions**

- Save
- Cancel

**Schedules**

Pre-record: 02:00 min Post-record: 10:00 min

Default keep: Until space is needed

**Guide**

Preferred: XMLTV overwrites DVB-EPG

Delete All Guide Data

**Recording Conflicts**

- ☐ Always adjust or drop pre/post-recording for consecutive recordings
- ☒ Adjust or drop pre/post-recording for recordings only in case of conflict
- ☐ Drop pre/post-recording for consecutive recordings only on the same channel
- ☒ Swap recordings priority for recordings to avoid conflicts with live streaming

**Disk Space**

Free disk space: 5000 MB

Minimum free disk space: 1000 MB

**Power Management**

Wake up your server: 2 minutes before event

**Recordings**

- ☒ Automatically create thumbnails for all television recordings
- ☐ Always create .arg metadata files (also on NTFS volumes)

**ARGUS TV**

Service: net.tcp://MEDIASERVER:49942/ArgusTV/ (Re)Connect...

☐ Check for new beta versions in update check (donators only)

**E-mail Server (SMTP)**

Leave SMTP server setting empty to disable e-mailing of errors.

Server: out.telenet.be

Port: 25 ☐ Server requires SSL connection

User name: (optional)

Password: (optional)

Administrator e-mail, use a semicolon (;) to enter more than one address.

E-mail(s): you@gmail.com

Send Test Mail

**ARGUS TV Messenger (for Windows Live Messenger)**

Bot account: my.argustv@outlook.com

Password: .....

Send alerts: 10 minutes before program starts

Windows Live account(s), use a semicolon (;) to enter more than one address.

Bot contact list: you@outlook.com

**Schedules:** Here you can specify the default number of minutes for pre- and post-recording, and the default keep mode to be used in new schedules.

**(Re)Connect:** Allows you to re-establish a connection with the server.

**TV Guide:** Allows you to express your preference concerning guide data.

**E-mail Server:** **ARGUS TV** can send you an e-mail when something requires your attention. In this section you can specify how **ARGUS TV** can reach you by sending mail.

For example, if you have a Gmail account, you have to fill in the following settings:

**E-mail Server (SMTP)**

Leave SMTP server setting empty to disable e-mailing of errors.

Server: smtp.gmail.com

Port: 587 ☒ Server requires SSL connection

User name: you@gmail.com (optional)

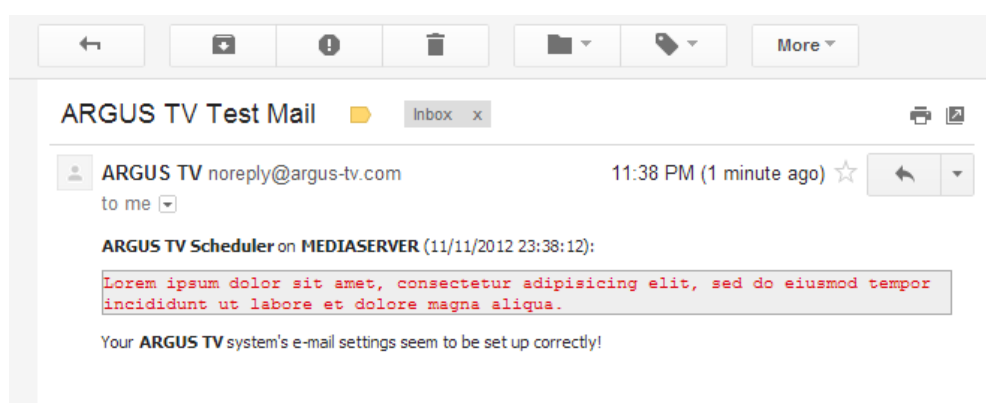
Password: .....

Administrator e-mail, use a semicolon (;) to enter more than one address.

E-mail(s): you@gmail.com

Send Test Mail

Using the Send Test Mail button, you can request ARGUS TV to send you a mail:



**Recording Conflicts:** These settings allow you to control the way programs are scheduled and assigned to the available recorder/tuner(s).

**Disk Space:** The free disk space is the trigger for **ARGUS TV** to start deleting “old” recordings that were created with the keep until setting (see scheduling options) “until disk space needed”. This cleanup will happen once every hour.

Minimum free disk space: when your storage has reached this amount of free disk space, recordings will no longer be triggered.

**Bot account:** The msn account that the Messenger service will use to sign into Windows Live.

**Send alerts:** Specify the number of minutes **ARGUS TV** should take into account before sending alerts. Time to alert = program start time – minutes specified.

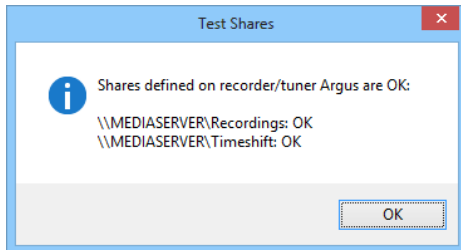
**Bot contact list:** The Windows Live contacts the Messenger service will add to its contact list. Use a semicolon (;) to separate multiple contacts.

A screenshot of a configuration window titled 'ARGUS TV Messenger (for Windows Live Messenger)'. It contains several input fields: 'Bot account:' with the value 'my.argustv@outlook.com', 'Password:' with a masked password '●●●●●●●●', 'Send alerts:' with a spinner set to '10' and the text 'minutes before program starts', and 'Bot contact list:' with the value 'you@outlook.com'. Below the 'Send alerts' field, there is a note: 'Windows Live account(s), use a semicolon (;) to enter more than one address.'

For further details about the ARGUS TV Messenger configuration, see [Messenger](#)

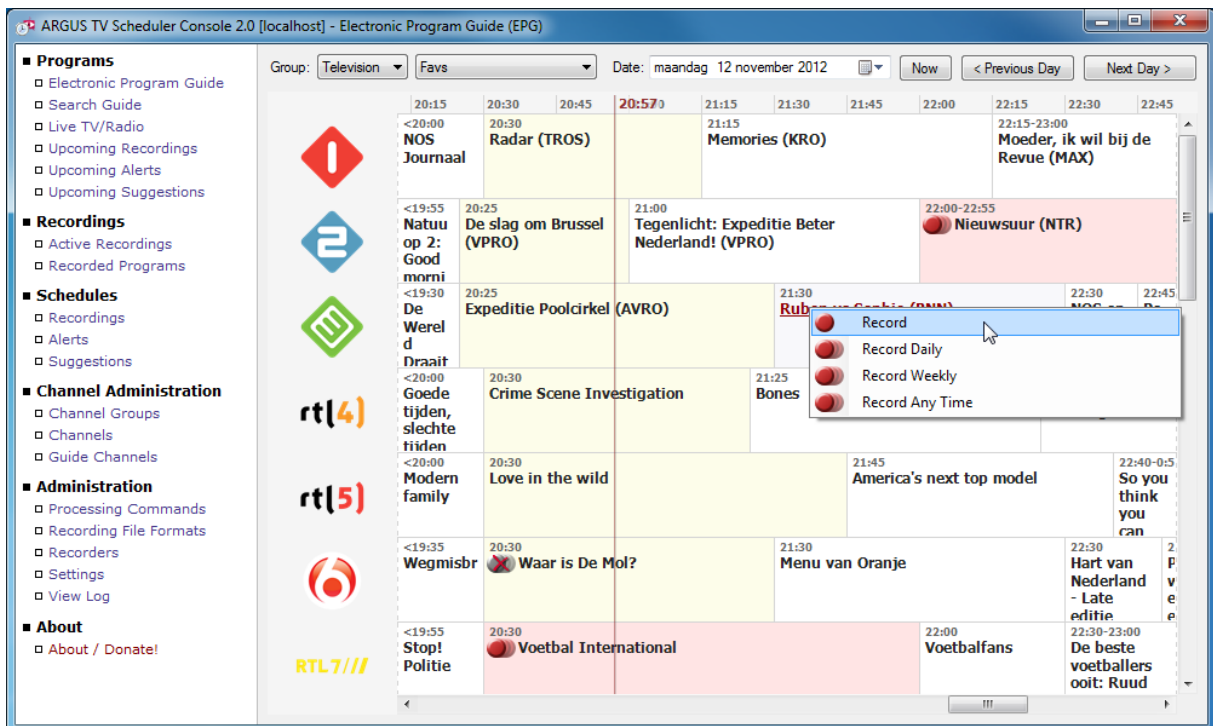
## 7.6 Testing the Recording Shares

The **ARGUS TV Scheduler** console allows you to test the shares on each recorder. Launch the console and go to the Recorders panel. Select the recorder you want to test and click the “Test Shares” button. A small dialog will pop up with information about the share:

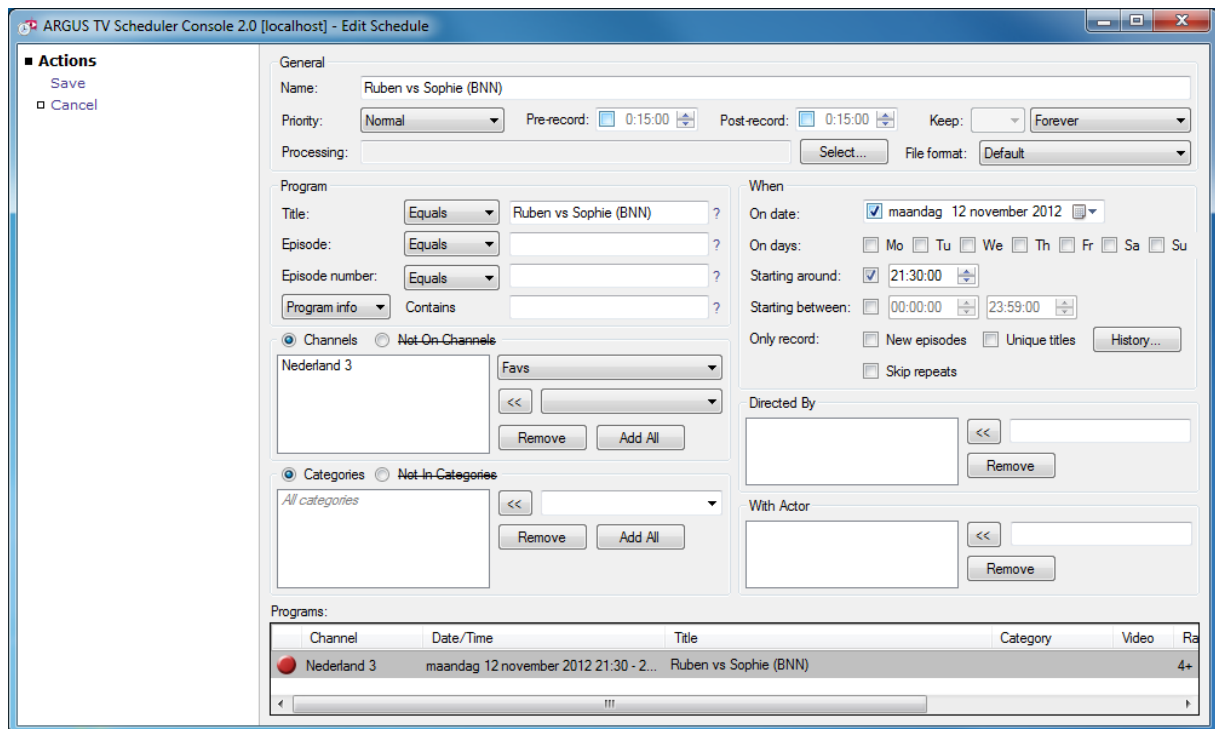


## 7.7 Scheduling Your First Recording

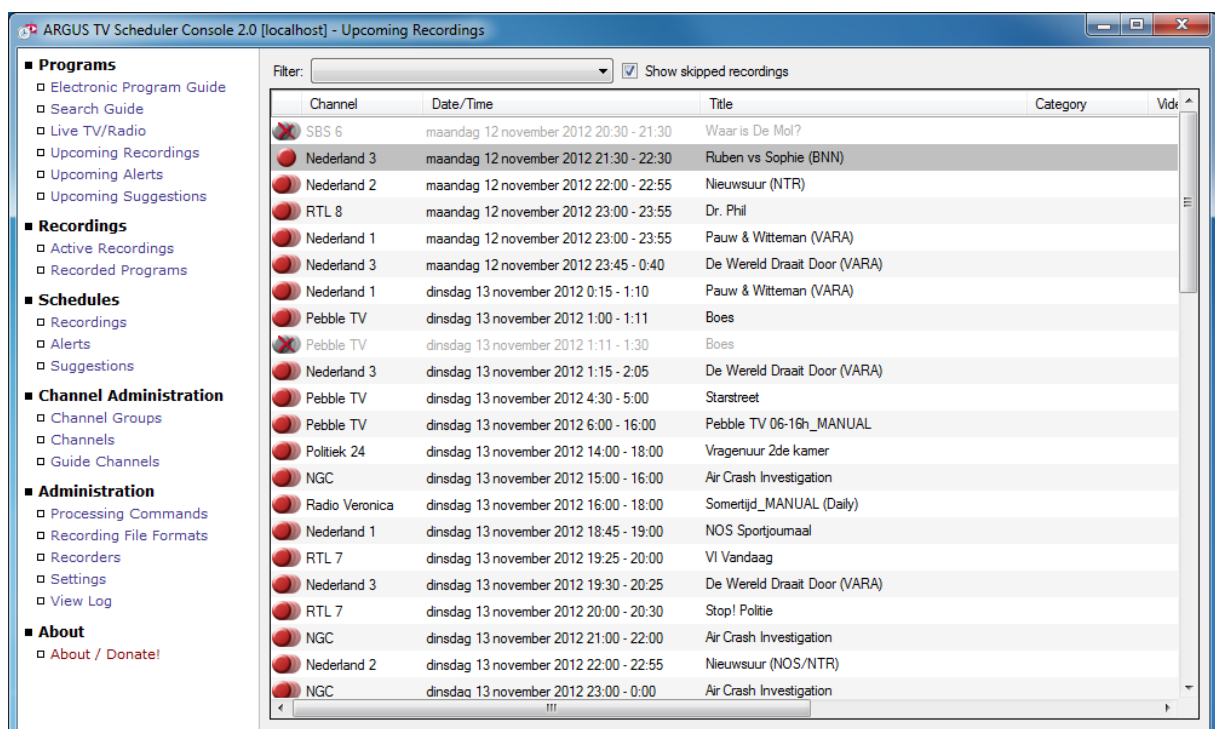
If you have everything up and running (at least one recorder/tuner is needed), you are ready for your first recording. For our first recording, we will take an easy manual recording. Scheduling using rules can be tested later on. Open **ARGUS TV Scheduler** console, and navigate to **Programs/TV Guide**. Choose a program on a channel that is about to begin, right click, and select record.



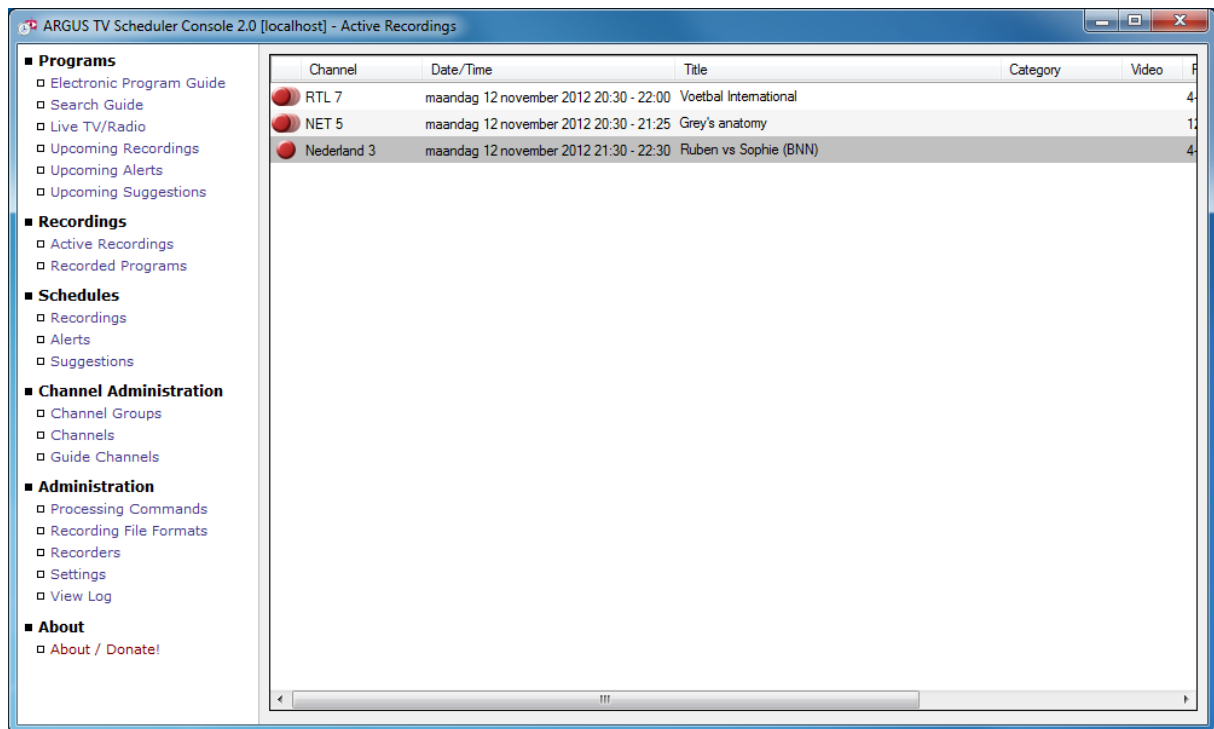
This will create a manual schedule, click save and you're done.



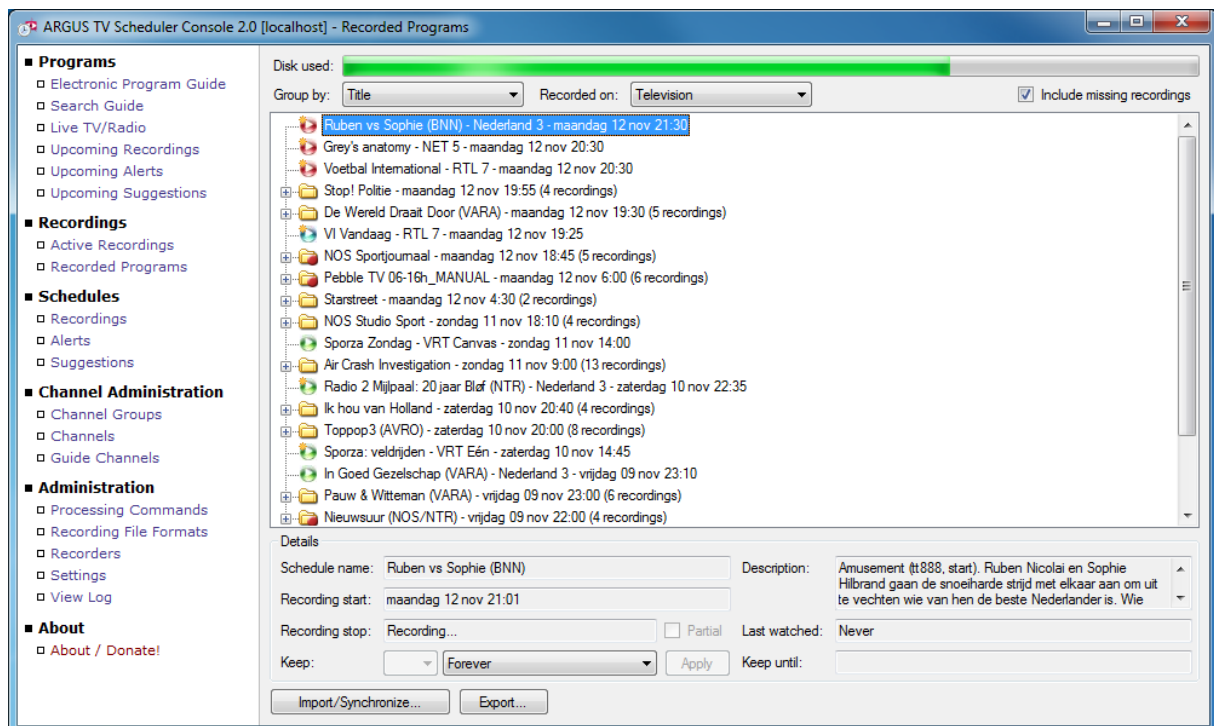
That done, we can now see our recording in the **Programs / Upcoming Recordings**:



When the recording has started, it will be listed in the **Programs / Active Recordings**:

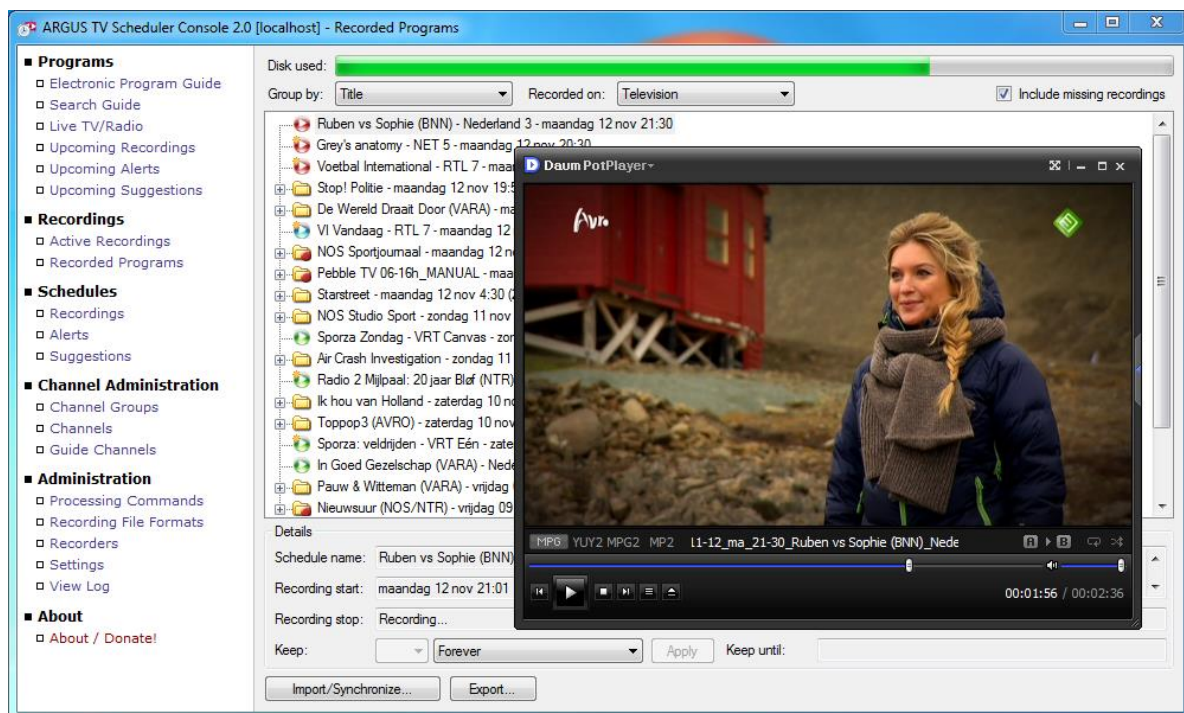


Now, you can also see the (ongoing) recording in the **Recordings / Recorded Programs**:

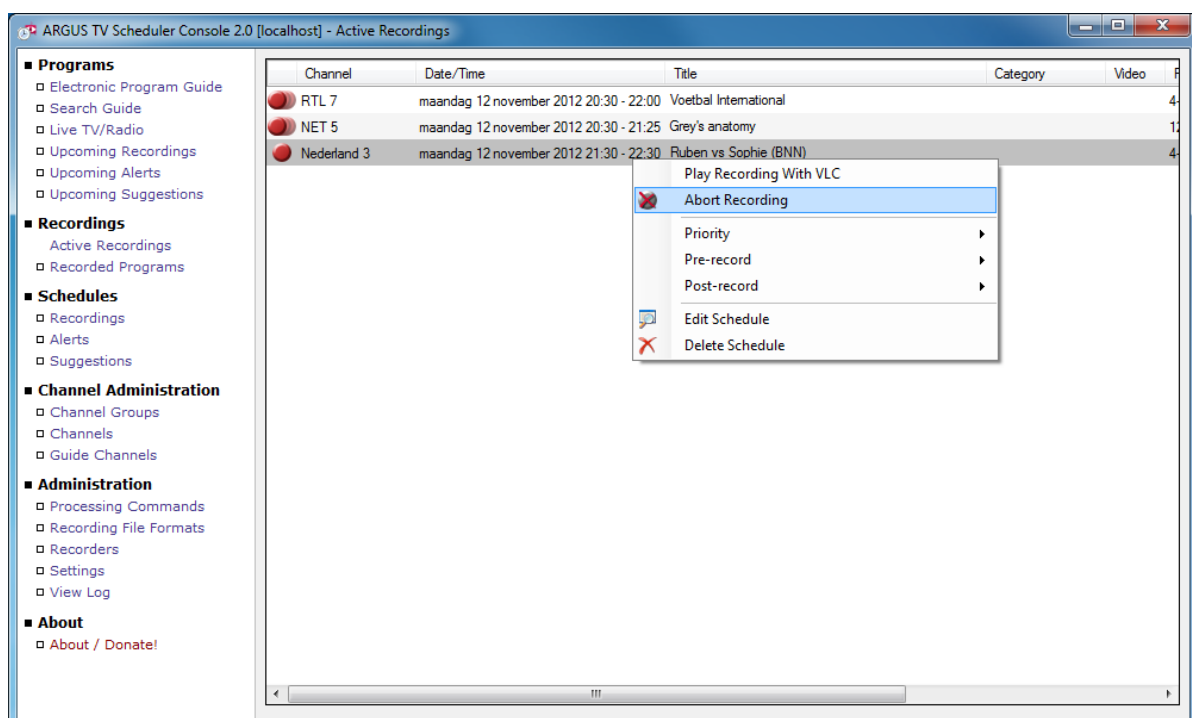




You can double click the program, and the associated viewer will open. Notice the red arrow icon, meaning that the recording is still busy. A green arrow indicates a completely recorded program, and a blue arrow indicates a partially recorded program.



You can abort the program by right clicking the program in the **Active Recordings** and select “Abort Recording”. It would result in partial recording.



Congratulations on your successful installation and first recording!



## 7.8 Channel logos

For each of the channels shown in your TV-guide (in any client), you can add a logo. This makes the TV guide look a lot nicer. To add the logos, proceed as follows: Open the "Channel Logos" folder, located under the `C:\ProgramData\ARGUS TV` folder and copy your logo files there. Note that the logos are not part of the website, but are provided through the ARGUS TV core service to any module that needs logos. Resizing, if needed, is also handled by the core service.

The naming convention is "channel name.png", replacing any special characters like `\ / : * ? " < > |` in the channel name with an underscore (`_`).

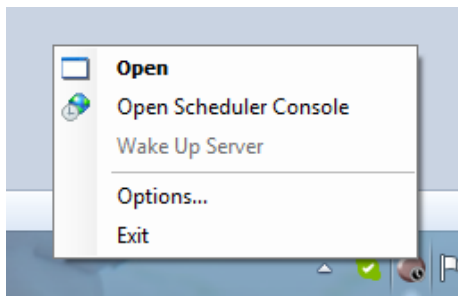
Some examples:

"BBC1" becomes `BBC1.png`, "Ketnet/Canvas" becomes `Ketnet_Canvas.jpg`.

## 7.9 Server Status Tray Application

This application is launched automatically at startup and presents itself in the system tray. It allows you to keep an eye on your server's activity. It works locally within your local network area, but also over an HTTPS connection, so you will be able to use it from basically anywhere in the world.

Right clicking the icon in the system tray gives you a number of options. The server status application also allows you to wake up your server, by sending it a wake on LAN command. When the server is up and running this command is disabled. Note that this Wake on LAN only works when the Server status application is running within your local network.



When recordings start or stop, balloons popup (if enabled), and hovering with the mouse over the icon in the system tray will show a little popup as shown below:



To configure the Server Status Notifier tray application, right click it's icon in the system tray, and select options. You will see the following dialog:

ARGUS TV Notifier Settings

ARGUS TV Scheduler service (local net.tcp)

Server:  TCP port:

ARGUS TV Scheduler service (remote https)

Server:  User name:

Transport: *HTTPS (binary)*  Password:

General

Poll interval:  seconds (HTTPS only)

☒ Show recording balloons (TCP only)

Time-out:  seconds

Console Path:

There are two distinct ways for the tray app to connect to **ARGUS TV**, over TCP or over HTTPS. When TCP is used, the **ARGUS TV** core services will notify the tray app when a change or a recording event occurs (start/stop). When HTTPS is used, the tray app will poll the core services for changes using your specified interval setting.

The MMC path setting is needed to be able to launch the management console when requested by using a right click on the tray icon and selecting "Open Management Console".

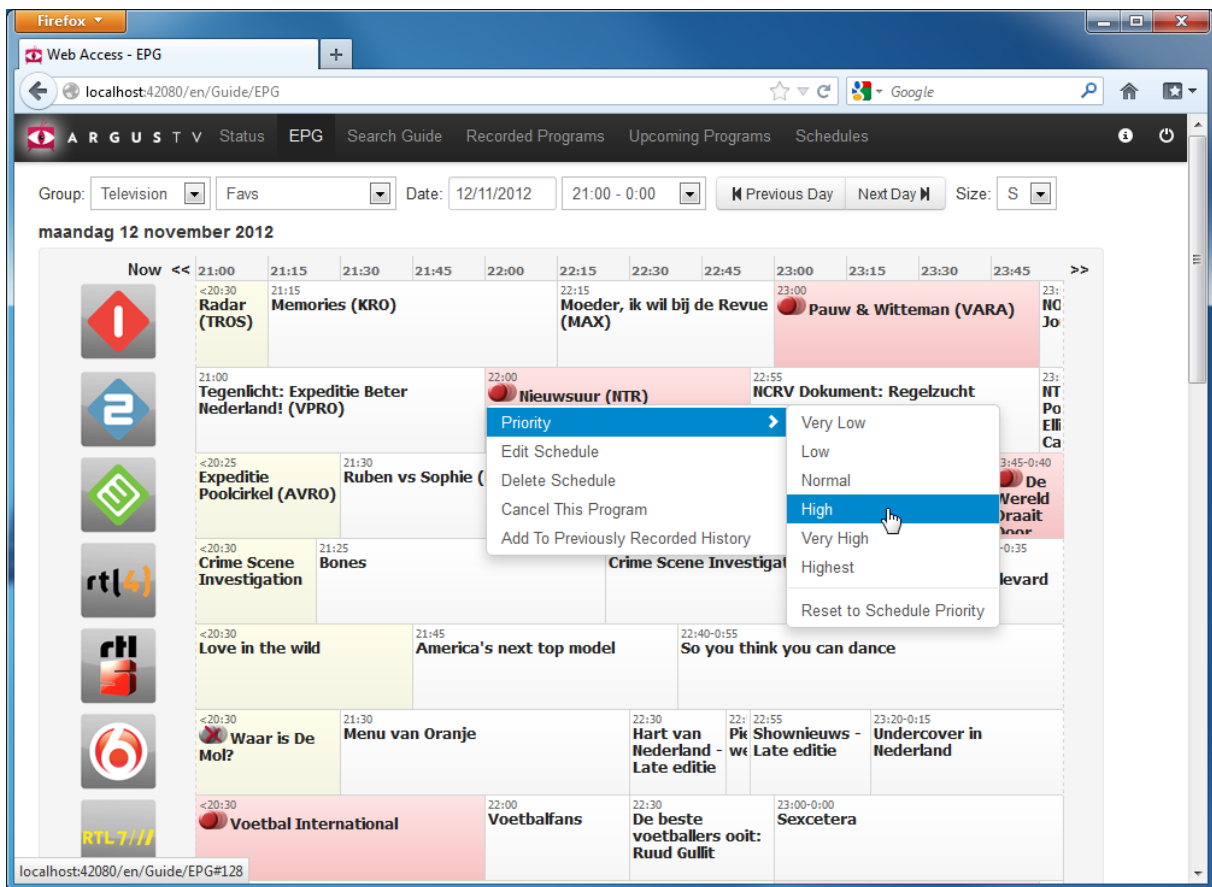
## 7.10 Web Access

After the installation, open your web browser, and navigate to the following url: (replace 'localhost' with the name of the server where you installed **ARGUS TV** when browsing from a different machine):

<http://localhost:42080> (in case of a Ultidev Web Server installation – the default)

<http://localhost/ArgusTV.WebAccess> (in case you installed on an existing IIS)

You will be prompted to log in. Enter the credentials you entered in the setup web-access credentials screen, and click "Log on".



You should now be able to browse the TV Guide and use the other functionalities.

## 7.11 Changing your username/password

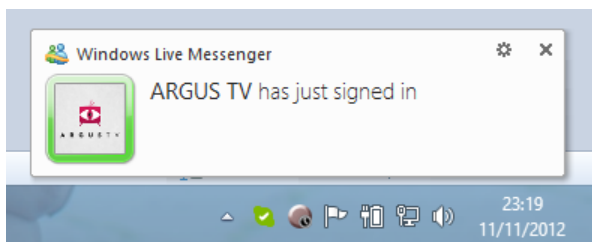
You can change your username and password by (carefully) editing the *Web.config* file in *C:\Program Files (x86)\ARGUS TV\Web Access* with notepad.

## 7.12 Messenger Service

To use the Messenger, first the accounts must be configured. The easiest way is to use two different machines, and sign in into Windows Live Messenger, and make sure both accounts are able to see each other, and are able to chat. Configure **ARGUS TV** to use the proper account, refer to the section [Server Settings](#), section Bot contact list. Also, make sure the Messenger windows service is running on your server (it should be auto-started).

Application Management	Processes installation, removal, and enumeration requests for software...		Manual	Local System
ARGUS TV Messenger	Allows communication with ARGUS TV using Windows Live Messenger.		Automatic	Local System
ARGUS TV Recorder	Tune and record television capture cards	Started	Automatic	Local System
ARGUS TV Scheduler	Advanced scheduling and recording engine for TV and radio programs	Started	Automatic	Local System
ASD.NET State Service	Provides support for out-of-process session states for ASD.NET. If this		Manual	Network S...

Once the account is saved in the Scheduler console, the Messenger service will automatically pick it up, and after a few seconds you will see the **ARGUS TV** account signing in:



Now, you should be able to open a chat session with **ARGUS TV**. Type "help" and **ARGUS TV** will respond with an overview of possible commands :



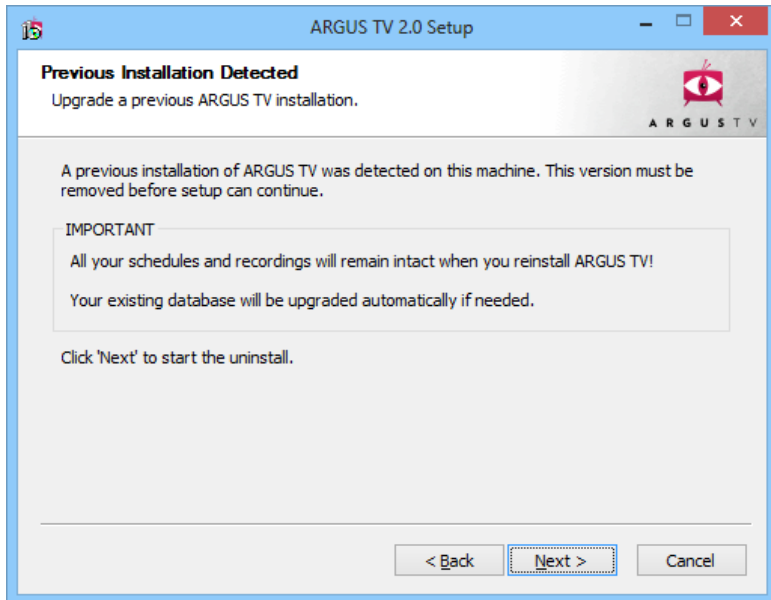
### 7.13 RTSP-streaming

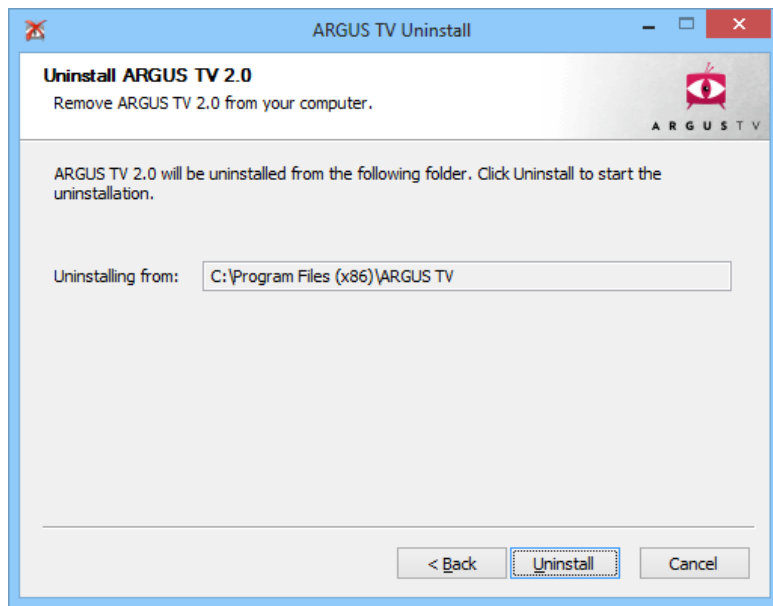
**ARGUS TV** has its own RTSP streaming server onboard. The server will be launched at the first incoming request. You can configure what port should be used for the streaming. The default port is 8554, but you can change that in the config file of the streaming server. In the StreamingServer folder open the ArgusTV.StreamingServer.exe.config and look for the setting named "RtspPortNumber". The setting will be picked up the next time the streaming server is launched, so you can either stop/start all **ARGUS TV** services, or just kill the ArgusTV.StreamingServer.exe process in taskmanager, it will automatically be restarted at the next incoming request.

To watch your recordings over RTSP from the MMC, there is a setting in the MMC config : Look in the config, and set the StreamRecordingsUsingRtsp to True.

## 8 Uninstall

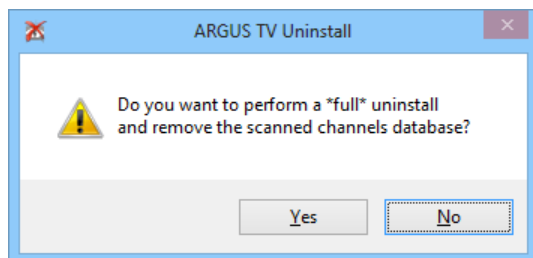
When a **ARGUS TV** installation is launched, it will automatically detect if an previous version is present on your system. If so, the uninstall will be launched when next is clicked in the welcome dialog of the setup. You can also launch the uninstall of **ARGUS TV** via control panel / uninstall a program, then select **ARGUS TV**.





The uninstall of **ARGUS TV** will not remove the data stored in the database. So all your recordings, schedules etc will be left untouched, and will be available to the new version once a new version is installed. So you can install - uninstall ARGUS TV as many times as you like without losing anything stored in the database.

If you installed the **ARGUS TV** native recorder/tuner called Argus, then the uninstall will prompt you to ask if you want to remove its own database containing the scanned channels info. If you choose yes, and you reinstall ARGUS TV with Argus, you will have to do a channel rescan.



The uninstall will undo all modifications the installer performed during installation.



**ARGUS TV** is now uninstalled from your system, and ready for a new version to be installed.